

# 2019-2020 BREWERY LAB PRODUCT GUIDE



**MERCEDES  
SCIENTIFIC™**

PHONE 800.331.2716

FAX 800.359.8807

WEB [MercedesScientific.com](http://MercedesScientific.com)



# LOOKING TO SET UP YOUR VERY OWN LAB?

CALL **800.331.2716** FOR A **FREE CONSULTATION!**

## **4** **EASY WAYS** TO PLACE AN ORDER!



**CALL**

**800.331.2716**

Weekdays, 8am–6pm ET



**WEB**

**MercedesScientific.com**

User-Friendly & Secure, 24/7



**FAX**

**800.359.8807**

All Day, Every Day



**EMAIL**

**orders@MercedesScientific.com**

All Day, Every Day

WE PROUDLY ACCEPT:







## About Us

Mercedes Scientific is a privately held and woman-owned medical and laboratory supply distributor located in Lakewood Ranch, FL. Since 1991, we have been dedicated to providing customers with competitive prices on quality products that we source both domestically and from around the world, ensuring the name brands customers have come to know and trust, and affordable alternatives for consideration. As a family business for over 25 years, we take our commitment to our customers to heart, but also recognize that work should be fun, for them and for us! Free giveaways are available for every order upon request, along with special sales and promotions available all year long.

**ALEX MILLER, CEO**

A handwritten signature in black ink, appearing to read "Alex Miller".



**ANALYTICAL EQUIPMENT.....4**



**BACTERIOLOGICAL TESTING.....8**



**CHEMICALS & SOLVENTS.....18**



**LABWARE.....20**



**EQUIPMENT.....42**



**CONSUMABLES.....56**



**MICROSCOPY.....60**





HYG SS3

## ATP Monitoring System Specifications

- Powered by 2 x AA batteries for several months of uninterrupted use
- **Memory Capacity (Programmable):** 100 Test Plans; 200 User IDs; 251 Locations Per Test Plan; 5,000 Test Locations
- Small, lightweight, handheld instrument
- Quick-test mode enables ad-hoc testing
- Large viewable screen with back-light and optional bold text
- Removable read chamber for easy cleaning
- Connects to SureTrend software via USB



HYG AQ100X



HYG US2020

### UltraSnap™

- Results in 15 minutes
- Simply swab, snap and squeeze
- Unique liquid-stable reagent provides longer-lasting signal strength, superior accuracy and more reproducible results
- Pre-moistened swab bud enables maximum sample collection

### AquaSnap™

- Results in 15 minutes
- Simply collect, snap and squeeze
- All-in-one sampling device for ATP detection in liquid samples
- Dipper collection tip is coated with an agent to aid in sample collection and ATP extraction for repeatable and accurate results

## SystemSURE Plus™

- **Most cost-effective ATP hygiene monitoring system available**
- Sensitive - Detects down to 1 femtomole ( $1 \times 10^{-15}$  moles) of ATP
- Advanced photodiode sensor offers low variation and stays in calibration
- Calibration self-check at start up with optional full diagnostic check mode
- Provides real-time feedback and facilitates long-term data analysis
- Optimizes and verifies that cleaning procedures are working

ITEM #	DESCRIPTION	QUANTITY
<b>HYG SS3</b>	SystemSURE PLUS™ Monitoring System	Each
<b>HYG US2020</b>	UltraSnap™ ATP Surface Tests	100/Box
<b>HYG AQ100X</b>	AquaSnap™ ATP Total Liquid Tests	100/Box



SIG C3599



SIG Z710520



SIG Z710474



SIG C5557

## pH Meters

- Portable meters boast an excellent value due to their comprehensive range of features and affordability
- Designed for routine pH measurements in the lab with simple functionality and convenience in mind
- Efficient sample reading and recording with flexible display options to show pH and temperature findings
- Compact design fits comfortably in your hand or right in your pocket (depending on size)

ITEM #	DESCRIPTION	QUANTITY
<b>COP SC0594210</b>	Oakton® pH Buffer Solutions Pack: 4.01   7.00   10.01 (500mL)	3/Pack
<b>FIS 13636AE152</b>	Accumet™ AE150 pH Benchtop Meter	Each
<b>SIG C3599</b>	Hanna Portable pH/Conductivity/TDS/Temperature Meter (Low Range)	Each
<b>SIG C3724</b>	Hanna Portable pH/Conductivity/TDS/Temperature Meter (High Range)	Each
<b>SIG C5557</b>	Hanna Portable Conductivity Meter	Each
<b>SIG P9741</b>	Hanna pHep pH Meter, 1 Point Calibration	Each
<b>SIG P9866</b>	Hanna pHep pH Meter, 2 Point Calibration	Each
<b>SIG P9991</b>	Hanna pHep+ pH Meter, 2 Point Calibration, Exposed Temperature Sensor	Each
<b>SIG Z351091</b>	Hanna Checker® pH Meter, 2 Point Manual Calibration w/Trimmers	Each
<b>SIG Z379409</b>	Hanna Piccolo® pH Meter, Calibration Manual Dual Point, 90mm Electrode	Each
<b>SIG Z379417</b>	Hanna Piccolo® 2 pH Meter, Calibration Manual Dual Point, 160mm Electrode	Each
<b>SIG P9565</b>	Hanna Piccolo® Plus pH Meter, Calibration Manual Dual Point, 160mm Electrode	Each
<b>SIG Z380601</b>	Replacement Electrode (90mm) for Hanna Piccolo® pH Meter	Each
<b>SIG Z380628</b>	Replacement Electrode (160mm) for Hanna Piccolo® 2 pH meter	Each
<b>SIG Z710474</b>	Hanna Waterproof Conductivity Meter	Each
<b>SIG Z710520</b>	Hanna pH/temp Meter, pH/Temperature Electrode	Each
<b>SIG Z710539</b>	Hanna pH/temp Meter, pH/ORP/Temperature Electrode	Each





## Traceable® pH/ORP Meter Kit

Water-resistant (IP67), highly accurate meter – handy kit comes with everything you need. Compact instrument fits in the palm of your hand making single-handed operation a breeze.

- **Includes:** Batteries, User Guide, Carrying Case, ISO Guide 34 CRM pH buffers, Traceable® Certificate
- **Accuracy:**  $\pm 0.02$  pH
- 25 point memory storage with time/date stamp
- **Triple Display:** Temperature, pH or ORP Measurement, Time/Date
- Ideal for wastewater, water quality and environmental applications
- **Individually serialized, calibrated and certified Traceable® to NIST**

ITEM #	DESCRIPTION	QUANTITY
CCM 4277CC	pH/ORP Meter Kit	Each

### Product Specifications

- **pH Range:** 0.00 to 14.00 pH
- **pH Resolution:** 0.01 pH
- **pH Accuracy:**  $\pm 0.02$  pH
- **ORP Range:** -1800 to 1800 mV
- **ORP Resolution:** 0.1mV <1000mV (1mV  $\geq$  1000mV)
- **ORP Accuracy:**  $\pm 20$  mV
- **Temperature Range:** 0 to 60°C (32 to 140°F) (Selectable)
- **Resolution:** 0.1° (1° when  $>100^\circ$ )
- **Accuracy:**  $\pm 1^\circ$ C

### Electrode Features:

- Polycarbonate body housing
- 12mm diameter, 4.4"/111mm length
- Single-junction gelled Ag/AgCl reference (sealed) with ceramic pin/pellon junction
- Full range pH sensor, 0.095" Platinum disc ORP sensor, and integral thermistor

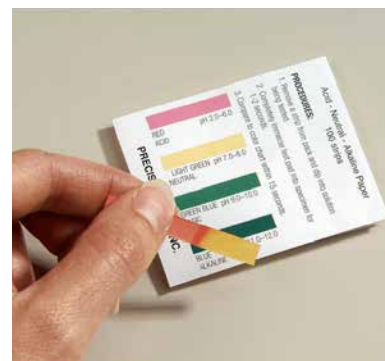




## Acid-Neutral-Alkaline pH Test Paper

- **Includes:** 4-Color Comparison Chart
- Economical test paper can litmus paper with a single strip
- Simply immerse strip into solution under test and compare to chart
- Determines if a solution is acidic (red), neutral (yellow-green), basic (green) or alkaline (blue)

ITEM #	DESCRIPTION	QUANTITY
<b>FIS S63129</b>	100 Strips/Vial	12 Vials/Pack



## MQuant® pH-Indicator Strips

- Cover different pH ranges from the universal range 0 to 14 or more specific ranges depending on the applications
- Non-bleeding test strips are suited for all media in environmental analysis and industrial in-process controls
- Covalently bound indicator dyes will not bleed even in strong alkaline solutions unlike conventional indicator papers
- SafetyEdge boxes allow for safe storage and convenient withdrawal
- No contamination when strips are left immersed in samples (including weakly buffered solutions) for extended periods

ITEM #	DESCRIPTION	QUANTITY
<b>EMD 1095400001</b>	pH 0-2.5	100/Pack
<b>EMD 1095350001</b>	pH 0-14.0	100/Pack
<b>EMD 1095350007</b>	pH 0-14.0	600/Pack
<b>EMD 1095840001</b>	pH 2.0-9.0	100/Pack
<b>EMD 1095410001</b>	pH 2.5-4.5	100/Pack
<b>EMD 1095420001</b>	pH 4.0-7.0	100/Pack
<b>EMD 1095330001</b>	pH 5.0-10.0	100/Pack
<b>EMD 1095330007</b>	pH 5.0-10.0	600/Pack
<b>EMD 1095430001</b>	pH 6.5-10	100/Pack
<b>EMD 1095320001</b>	pH 7.5-14.0	100/Pack



## G-Series Fume Hoods

- Portable tabletop design, no outside venting required
- Systems enclose materials and operations under negative pressure, thereby preventing airborne contaminants from escaping into the work environment
- Contaminated air is drawn through a variety of filters to remove pollutants
- Hoods are constructed of clear, acrylic and polycarbonate panels with sturdy aluminum framing
- Clear vinyl curtain for easy access while maintaining optimal airflow across the opening

### FILTERS SOLD SEPARATELY!

ITEM #	DESCRIPTION	QUANTITY
<b>AIR G24</b>	<b>Workspace:</b> 17"H x 22"W x 17"D, <b>Overall:</b> 32.5"H x 24"W x 18"D	Each
<b>AIR G30</b>	<b>Workspace:</b> 17"H x 28"W x 17"D, <b>Overall:</b> 32.5"H x 30"W x 18"D	Each
<b>AIR G50</b>	<b>Workspace:</b> 17"H x 48"W x 17"D, <b>Overall:</b> 32.5"H x 50"W x 18"D	Each



AIR G24



AIR G50

## Glutaraldehyde Tabletop Fume Hood Workstation

- Environmental protection for hospitals, surgicenters and physicians' offices
- Protective hoods designed to contain fumes from highly toxic disinfectants and liquid sterilizing solutions
- Accommodates **(1) Soaking Tray and (1) Rinsing Tray**
- Utilizes 2-stage activated charcoal filter bed impregnated with a glutaraldehyde neutralizer
- Filter monitoring port on the front of the blower base monitors sealed air space between the two filter beds
- Baffled to concentrate airflow directly over soaking trays
- **Typical replacement time for this filter is one year**
- **Includes: Fume Hood, Filter (AIR FRC9)**

ITEM #	DESCRIPTION	QUANTITY
<b>AIR G36G</b>	<b>Overall:</b> 17"H x 34"W x 20"D, <b>Workspace:</b> 32.5"H x 36"W x 21"D	Each



AIR G36G



ARS PURAIR548

**BEST  
VALUE**



ARS PURAIR536

ARS PURAIR524

## Purair® Basic Ductless Fume Hoods

- Designed to protect both the user and the environment from hazardous vapors generated on the work surface
- **360° Visibility:** Clear panels allow ambient illumination into the chamber and provide users with an unobstructed view of its contents
- **Multiplex Filtration System** consists of a pre-filter, a main activated carbon filter and an optional HEPA/ULPA filter
- Low airflow alarm warns of insufficient face velocity
- Unique filter clamping design eliminates bypass leakage outside the cabinet

ITEM #	DESCRIPTION	QUANTITY
<b>ARS PURAIR524</b>	24"W × 27"D × 35"H	Each
<b>ARS PURAIR536</b>	36"W × 27"D × 35"H	Each
<b>ARS PURAIR548</b>	48"W × 27"D × 35"H	Each



FAX 800.359.8807



WEB MercedesScientific.com





## Mystaire® Downflow Workstation

- Stand-alone, ductless unit protects workers from chemical fumes or powders
- Open design allows for close inspection of samples while maintaining a high level of operator protection
- Particles or fumes are drawn downward through the stainless steel work surface and contaminants are removed by a series of filters
- Clean air returns to the room after the fumes or particulates are filtered
- *Lightweight, durable aluminum frame*
- *Corrosion resistant powder-coated exterior*
- *Automatic filter monitoring and alarm*
- *Internal fluorescent light*
- *HEPA or carbon filtration*
- *Centrifugal, sparkless fan*

### REQUIRES ONE MAIN FILTER, NOT INCLUDED!

- **Electrical:** 110V (60Hz)
- **Lighting:** (1) 15 watt Fluorescent Bulb
- **Dimensions:** 24"W x 28"H x 32"D

ITEM #	DESCRIPTION	QUANTITY
MYS FEWS6	Downflow Workstation	Each

## Disposable Inoculation Loops

- Loop on one end and an integrated needle on the other
- Available in 1 $\mu$ L, 10 $\mu$ L or 10/1 $\mu$ L configuration
- Each case includes a certificate of calibration

### STERILE, INDIVIDUALLY WRAPPED

ITEM #	DESCRIPTION	QUANTITY
<b>GLO 2810</b>	10 $\mu$ L & 1 $\mu$ L Combo, Sterile, White, 20/Pack, 25 Pack/Case	500/Case
<b>GLO 2811</b>	1 $\mu$ L w/Needle, Sterile, Blue, 20/Pack, 25 Pack/Case	500/Case
<b>GLO 2815</b>	10 $\mu$ L w/Needle, Sterile, Yellow, 20/Pack, 25 Pack/Case	500/Case
<b>GLO 2850</b>	10 $\mu$ L & 1 $\mu$ L Combo, Sterile, White, Individually Wrapped	500/Case
<b>GLO 2851</b>	1 $\mu$ L w/Needle, Sterile, Blue, Individually Wrapped	500/Case
<b>GLO 2855</b>	10 $\mu$ L w/Needle, Sterile, Yellow, Individually Wrapped	500/Case
<b>GLO 2860</b>	10 $\mu$ L & 1 $\mu$ L Combo, Sterile, White, 10/Pack, 50 Pack/Case	500/Case
<b>GLO 2861</b>	1 $\mu$ L w/Needle, Sterile, Blue, 10/Pack, 50 Pack/Case	500/Case
<b>GLO 2865</b>	10 $\mu$ L w/Needle, Sterile, Yellow, 10/Pack, 50 Pack/Case	500/Case

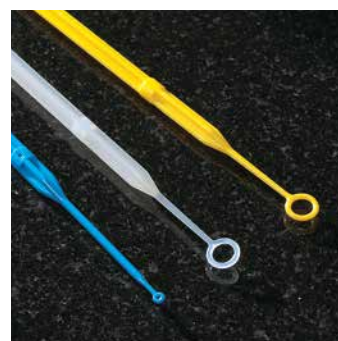
### POLYPROPYLENE, FLEXIBLE FEEL

ITEM #	DESCRIPTION	QUANTITY
<b>GLO 2801</b>	1 $\mu$ L, Sterile, w/Needle, Natural	1,000/Case
<b>GLO 2805</b>	10 $\mu$ L, Sterile, w/Needle, Blue	1,000/Case

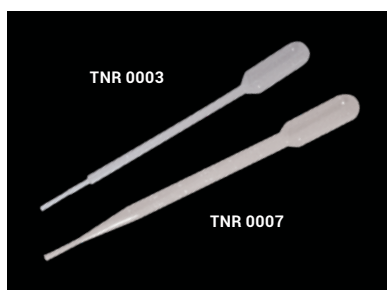
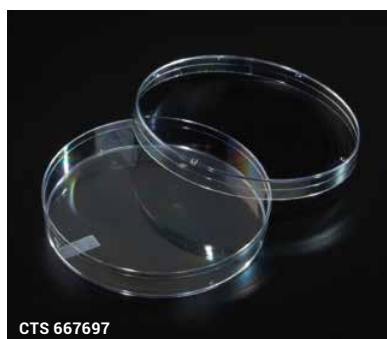
## Inoculating Loops

- Flexible for easy access to small volume tubes and dishes
- Color coded for easy identification
- Gentle on delicate agar or other surfaces

ITEM #	DESCRIPTION	QUANTITY
<b>CTS 229610</b>	10 $\mu$ L, Blue, Bulk Pack, Sterile	2,000/Case
<b>CTS 229612</b>	10 $\mu$ L, Blue, Individual Pack, Sterile	600/Case







## Sterile Petri Dishes

- Manufactured in high capacity automated production lines resulting in high quality, value priced products
- Ventilation ribs reduce condensation and allow air circulation
- Consistent flatness allows for even media distribution
- **Slideable Dishes:** Partial edge ring on base to allow a single dish to be slid from a large stack and enhances stability when stacked
- **Stackable Dishes:** Lids contain stacking rings for increased stability
- **Slippable Dishes:** Designed for automated filling and streaking systems, features side arrows and ISO Mark Target for automation

ITEM #	DESCRIPTION	QUANTITY
<b>CTS 667665</b>	60mm x 15mm	500/Case
<b>CTS 667694</b>	100mm x 15mm, Slideable	500/Case
<b>CTS 667695</b>	100mm x 15mm, Stackable	500/Case
<b>CTS 667697</b>	100mm x 15mm, Slippable	500/Case
<b>CTS 667653</b>	150mm x 20mm	500/Case

### STERILE COMPARTMENT PETRI DISHES

- For simultaneous studies of organisms in a common environment
- Molded dividers create completely separate compartments while also allowing airflow
- Ridge on bottom dish allows easy handling and stacking
- Lids contain molded spacers to allow gas exchange

ITEM #	DESCRIPTION	QUANTITY
<b>CTS 667682</b>	100 x 15mm, 2 Compartments	500/Case
<b>CTS 667683</b>	100 x 15mm, 3 Compartments	500/Case
<b>CTS 667684</b>	100 x 15mm, 4 Compartments	500/Case

## Transfer Pipets

- Disposable, graduated pipet tips for liquid handling procedures
- Used to draw and dispense liquids in controlled drop sizes

ITEM #	DESCRIPTION	QUANTITY
<b>TNR 0003</b>	5mL, Graduated up to 1mL, 4mL Bulb, Total Volume: 5mL	500/Box
<b>TNR 0007</b>	7mL, Graduated up to 3mL, 4mL Bulb, Total Volume: 7mL	500/Box

## Serological Pipets

- All serological pipets are manufactured to the ASTM Standard Specification for Serological Pipets E-934
- Bi-directional (positive and negative) graduations are printed in bold easy-to-read ink
- Premium material barrier plug
- Color coded stripes enable quick volume identification
- Printed indicator arrow for quickly locating negative graduations when using a pipet controller
- 10mL wide tip serological pipet is designed for viscous solutions – wide tip opening is 4x larger than standard 10mL pipet
- 25 & 50mL pipets feature an anti-drip tip for accurate delivery

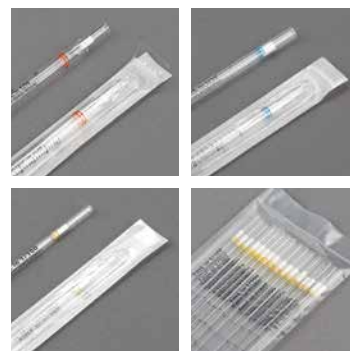
### STERILE, INDIVIDUALLY WRAPPED

ITEM #	DESCRIPTION	QUANTITY
<b>CTS 229001B</b>	1mL, Yellow Striped, 100/Bag	500/Case
<b>CTS 229002B</b>	2mL, Green Striped, 100/Bag	500/Case
<b>CTS 229005B</b>	5mL, Blue Striped, 50/Bag	200/Case
<b>CTS 229010B</b>	10mL, Orange Striped, 50/Bag	200/Case
<b>CTS 229025B</b>	25mL, Red Striped, 50/Bag	200/Case
<b>CTS 229030B</b>	50mL, Purple Striped, 25/Bag	100/Case
<b>CTS 229212B</b>	10mL, Orange Striped, Wide Tip	200/Case

### NON-STERILE, 25-PIECE BAGS

- Produced from crystal clear polystyrene (PS)
- Anti-drip tips help accommodate more viscous liquids
- Calibrated to deliver with the highest degree of accuracy
- Aerosol barrier filter plug prevents contamination of pipettors
- All pipets are free of DNase, RNase, pyrogens and cytotoxins
- Reverse graduations and negative graduations on all sizes
- Color coded for easy volume identification

ITEM #	DESCRIPTION	QUANTITY
<b>GLO 1715</b>	1mL, Yellow Striped, 275mm	1,000/Box
<b>GLO 1735</b>	2mL, Green Striped, 275mm	1,000/Box
<b>GLO 1755</b>	5mL, Blue Striped, 342mm	375/Box
<b>GLO 1775</b>	10mL, Orange Striped, 345mm	250/Box
<b>GLO 1784</b>	25mL, Red Striped, 345mm	100/Box





## eCount Colony Counter

The eCount handheld is a simple to use colony counter for counting cells in microbiology applications or tissue culture. This unit combines a multi-function electronic counter with a Sharpie® pen for counting and marking to prevent missing or double-counting colonies in a petri dish.

- Features a light, ergonomic body that is balanced for easy manipulation
- Convenient easy to use touch controls for multiple counts, sums, counting up or down and turning the unit on/off
- Count up/down verification enables you to confirm your counts
- Thumb button allows you to use the eCount as a digital tally counter
- Easily verify each count with either an audible beep or LED flash
- Displays totals for up to 32 individual counts or zones
- Quick and easy to change between different colored markers to check different colony counts in the same view
- Multi-functional counter can be turned off to be used for writing
- Up to 999 colonies per zone helps simplify the counting process



### PACKAGE INCLUDES:

- **eCount Colony Counter**
- **Black Sharpie® Pen** for highly visible marks on both plastic and glass
- **Long-life Button Battery** (CR1225 3.0 V Lithium)
- **Hand Tally Adapter** counts without marking
- **Weighted Stand** for convenient bench top use

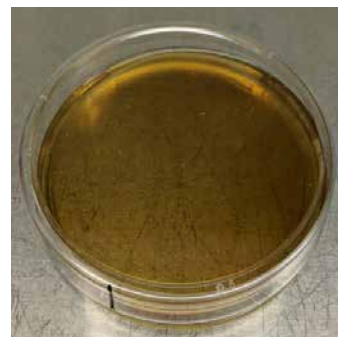
ITEM #	DESCRIPTION	QUANTITY
HEA HD15092A	eCount Colony Counter	Each
HEA HD15092ZP	Replacement Pens	12/Pack



## Universal Beer Agar

- Used for the cultivation of bacteria and yeasts encountered in the brewing industry in a laboratory setting
- Not intended for diagnosis of disease or other conditions in humans
- Supports growth of *Lactobacillus*, *Pediococcus*, *Acetobacter*, and yeasts that are known beer contaminants

ITEM #	DESCRIPTION	QUANTITY
<b>NEO 7574A</b>	Universal Beer Agar	500g



## BD BBL™ DrySlide™ Oxidase

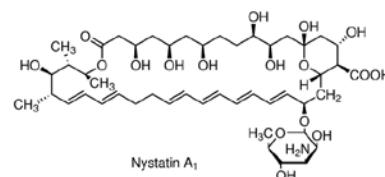
- Convenient method for bacterial biochemical analysis
- Each slide is film-coated with an oxidase reagent (N, N, N', N'-tetramethyl-p-phenylenediamine dihydrochloride)
- Tests for the presence of cytochrome C oxidase activity in bacteria
- Positive result produces a purple color within 20 seconds
- Reagent is dried on the slide, eliminating the need for more reagent
- Each slide is divided into four compartments or reaction areas

ITEM #	DESCRIPTION	QUANTITY
<b>BBL 231746</b>	Oxidase Test Slides	75/Pack



## Nystatin

- Fungistatic, fungicidal polyene antibiotic increases the permeability of the cell membrane of sensitive fungi by binding to sterols
- Prevents cell culture contamination and induces interleukin
- Mainly used against *Candida species*, but is also effective against *Aspergillus*, *Coccidioides immitis*, *Cryptococcus neoformans*, *Histoplasma capsulatum*, *Blastomyces dermatidis*, and other yeasts and fungi
- Used to enrich mutants by killing yeast cells



ITEM #	DESCRIPTION	QUANTITY
<b>SIG N35035MU</b>	Nystatin Powder, 5MU	Each



## Beer Culture Media

### Culture Media for the Brewing Industry

#### For the cultivation of microorganisms of significance

Choose from a wide selection including UBA, WL Nutrient and Differential, Barney Miller and many more.



DESCRIPTION	ITEM #	BRAND	QUANTITY
<b>Bacteriological Agar</b>	<b>WEB 311612</b>	Alpha Biosciences	500 gram
<b>Barney Miller Agar</b> For detection of beer spoilage organisms	<b>WEB 311620</b>	Alpha Biosciences	500 gram
	<b>WEB 311621</b>	Alpha Biosciences	2 kilogram
<b>Crystal Violet Stock Solution</b> For use with Lin's Wild Yeast Medium	<b>WEB 311812</b>	Weber	100mL
<b>Cycloheximide Crystals</b> For detection of beer spoilage organisms	<b>WEB 311861</b>	Ameresco	5 gram
	<b>WEB 311860</b>	Ameresco	1 gram
<b>HLP Medium (Hsu's Lactobacillus and Pediococcus Medium)</b> Allows for the detection of Lactobacillus and Pediococcus species, while restricting the growth of culture yeast	<b>WEB 311805</b>	Weber	500 gram
<b>LCSM (Lin's Cupric Sulfate Medium)</b> For detection and quantification of non-saccharomyces wild yeast populations in brewing culture yeast	<b>WEB 311808</b>	Weber	500 gram
<b>LMDA (Lee's Multi-Differential Agar)</b> Used for the detection and enumeration of yeast and bacteria in the beer	<b>WEB 311817</b>	Weber	500 gram
<b>LWYM (Lin's Wild Yeast Medium)</b> For detection and quantification of saccharomyces wild yeast populations in brewing culture yeast	<b>WEB 311811</b>	Weber	500 gram
<b>MacConkey Agar</b>	<b>WEB 311647</b>	Alpha Biosciences	500 gram
<b>Malt Extract Agar</b> Isolating, cultivating and enumerating yeasts and molds	<b>WEB 308726</b>	Difco	500 gram
	<b>WEB 311651</b>	Alpha Biosciences	500 gram
<b>MRS Agar</b> Isolating and cultivation of Lactobacilli	<b>WEB 309743</b>	Difco	500 gram
	<b>WEB 311636</b>	Alpha Biosciences	500 gram
<b>MRS Broth</b> Broth formulation of MRS agar for cultivation of Lactobacilli	<b>WEB 309545</b>	Difco	500 gram
	<b>WEB 311633</b>	Alpha Biosciences	500 gram

## Beer Culture Media

### Culture Media for the Brewing Industry

#### *For the cultivation of microorganisms of significance*

Choose from a wide selection including UBA, WL Nutrient and Differential, Barney Miller and many more.



DESCRIPTION	ITEM #	BRAND	QUANTITY
<b>Nutrient Broth</b> Cultivation of microorganisms	<b>WEB 309779</b>	Difco	100 gram
	<b>WEB 309777</b>	Difco	500 gram
	<b>WEB 311656</b>	Alpha Biosciences	500 gram
	<b>WEB 311657</b>	Alpha Biosciences	2 kilogram
<b>Universal Beer Agar</b> Cultivation of microorganisms significant in the brewing industry	<b>WEB 309760</b>	Difco	500 gram
	<b>WEB 311626</b>	Alpha Biosciences	500 gram
	<b>WEB 311627</b>	Alpha Biosciences	2 kilogram
<b>WL Differential Agar</b> For use in the isolation of bacteria encountered in brewing and industrial fermentation processes	<b>WEB 311581</b>	Criterion	500 gram
<b>WLD Medium (Wallerstein Laboratories Differential Medium)</b> For selective isolation and enumeration of bacteria encountered in breweries and industrial fermentations	<b>WEB 311820</b>	Weber	500 gram
<b>WL Nutrient Agar (WLN Medium)</b> For use in the selective isolation of bacteria encountered in brewing and industrial fermentations	<b>WEB 311628</b>	Alpha Biosciences	500 gram
	<b>WEB 311629</b>	Alpha Biosciences	2 kilogram
<b>Wort Agar</b> Cultivation and enumeration of yeasts	<b>WEB 309785</b>	Difco	500 gram
<b>Yeast Extract</b> Provides a maximum of nutrients for bacterial growth	<b>WEB 311681</b>	Alpha Biosciences	500 gram







## Check Out Our Most Popular Chemicals and Solvents!

Below is our **TOP SELLING** chemicals for Brewery Labs!

ITEM #	DESCRIPTION	QUANTITY
<b>MER 1220</b>	Isopropyl Alcohol, ACS Reagent	1 Gallon
<b>EKI 153351GL</b>	Water, Deionized ACS Reagent	1 Gallon
<b>EKI 52001L</b>	Hydrochloric Acid, 6.00	1 Liter
<b>EKI 132051L</b>	Sodium Hydroxide Solution, 5.00	1 Liter
<b>EKI 77271GL</b>	Isopropyl Alcohol, 70% Purified	1 Liter
<b>SIG 348624L</b>	2,2,4-Trimethylpentane, HPLC	4 Liter



EKI 77271GL

**Not Seeing the Chemicals You Need?**  
Contact us today and we'll find it together!



EKI 2500500ML



EKI 2520500ML



EKI 2540500ML



EKI 4002500ML



EKI 4001500ML

## pH Buffer Solutions

- Each buffer is color-coded for easy identification
- Includes buffer/temperature tables for accurate calibrations

ITEM #	DESCRIPTION	QUANTITY
<b>EKI 2495500ML</b>	pH 2.00, Clear	500mL
<b>EKI 2500500ML</b>	pH 4.01, Red	500mL
<b>EKI 2508500ML</b>	pH 5.00, Clear	500mL
<b>EKI 2520500ML</b>	pH 7.00, Yellow	500mL
<b>EKI 2540500ML</b>	pH 10.00, Blue	500mL

## pH Electrode Solutions

- Storage solutions are prepared with reagent grade chemicals to ensure optimum performance of electrodes

ITEM #	DESCRIPTION	QUANTITY
<b>EKI 4002500ML</b>	Storage Solution	500mL
<b>EKI 4001500ML</b>	Cleaning Solution	500mL



EKI 153351GL

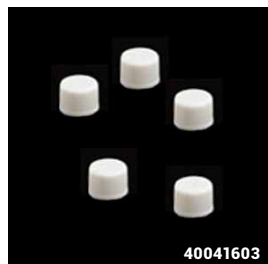



**BEST  
VALUE**

## Lab Plastics

- Polystyrene (PS), Polypropylene (PP), Polyethylene (PE)

ITEM #	DESCRIPTION	QUANTITY
<b>MER 40040809</b>	Test Tube, 13 x 75mm, 5mL, <b>PS</b>	1,000/Bag
<b>MER 40040811</b>	Test Tube, 13 x 75mm, 5mL, <b>PP</b>	1,000/Bag
<b>MER 40041504</b>	Transport Tube, 16 x 96mm, 10mL, Conical Bottom, Self-Standing, Separate White Screw Cap, <b>PP</b>	1,000/Bag
<b>MER 46101842</b>	Microcentrifuge Tube, 1.5mL, Snap Cap, Natural, <b>PP</b>	500/Bag
<b>MER 40041603</b>	False Bottom Tube White Screw Cap, <b>PE</b>	500/Bag
<b>MER 40701012</b>	Plug Cap, 12mm, Flanged, Natural, <b>PE</b>	1,000/Bag
<b>MER 40701013</b>	Plug Cap, 13mm, Flanged, Natural, <b>PE</b>	1,000/Bag
<b>MER 4070101602</b>	Plug Cap, 16mm, Flanged, Blue, <b>PE</b>	1,000/Bag
<b>MER 4330001517</b>	Pipet Tip, 1-200uL, Yellow, Sterile, <b>PP</b>	100/Bag





## Fisherbrand™ Reusable Glass Short-Stem Funnels

- Manufactured from borosilicate glass
- High resistance to chemical attack, mechanical and thermal shock
- Made with heavy uniform walls, fire-polished stems and molded rims
- Formed to a 58° angle for faster, more effective filtering
- Cone is suspended by its uppermost edge, leaving area for filtration
- Designed from ASTM Specification, Type I, Class A requirements

ITEM #	DESCRIPTION	QUANTITY
<b>FIS FB60158100</b>	Bowl Capacity: 225mL	6/Pack



## Disposable Funnels

- Economical, disposable funnels are available in transparent polystyrene or translucent polypropylene
- Lightweight with reinforced rims and inside fluting
- **Polypropylene:** tolerates strong acids, alkalis and organic solvents
- **Polystyrene:** suitable for aqueous solutions, weak acids and alkalis
- Heat-resistant and withstand temperatures up to 121°C
- Polypropylene funnels are autoclavable
- Tapered at a 60° angle
- **Packaged 100/Pack (25/Sleeve, 4 Sleeves/Pack)**



ITEM #	FUNNEL SIZE	MATERIAL	TOP ID	HEIGHT	STEM LENGTH	STEM OPENING	FILTER PAPER SIZE
<b>GLO 8301</b>	55mm	Polystyrene (PS)	55mm	69mm	25mm	4.3mm	11cm
<b>GLO 8302</b>	65mm	Polystyrene (PS)	65mm	78mm	30mm	4.3mm	12.5cm
<b>GLO 8303</b>	55mm	Polypropylene (PP)	55mm	69mm	25mm	4.3mm	11cm
<b>GLO 8304</b>	65mm	Polypropylene (PP)	65mm	78mm	30mm	4.3mm	12.5cm







EIS CH0344D



EIS CH0344AWT



EIS CH0344A



EIS CH0139



## Cylinders

### MEASURING GRADUATED CYLINDERS

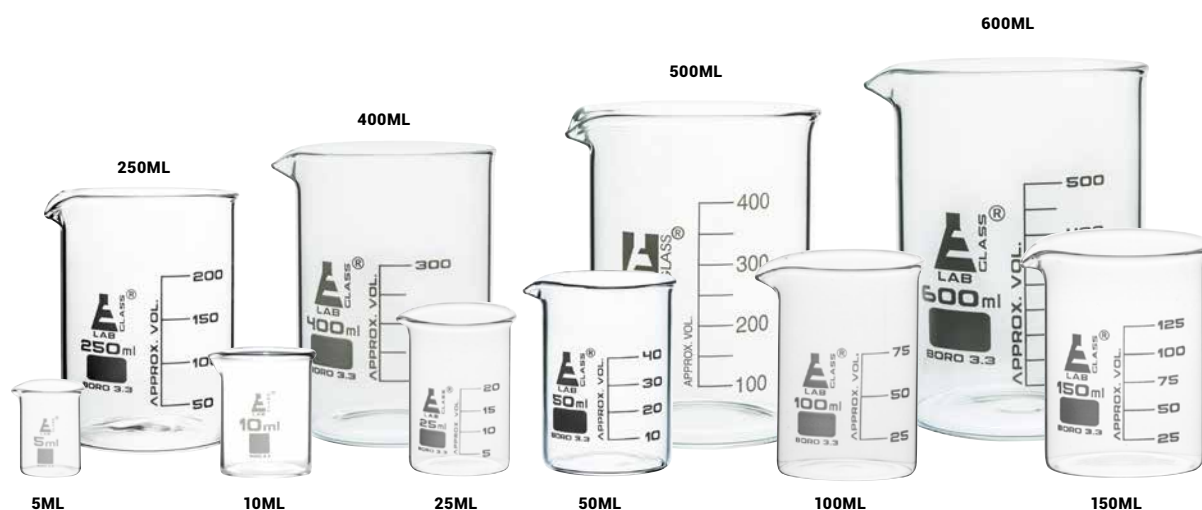
- Manufactured from Class B borosilicate glass
- Round base with spout as per DIN EN ISO 4788 standard

BLUE GRADUATIONS	WHITE GRADUATIONS	CAPACITY	SUBDIVISION	TOLERANCE $\pm$	QUANTITY
<b>EIS CH0344A5</b>	<b>EIS CH0344A5WT</b>	5mL	0.1mL	0.10mL	Each
<b>EIS CH0344A10</b>	<b>EIS CH0344A10WT</b>	10mL	0.2mL	0.20mL	Each
<b>EIS CH0344A</b>	<b>EIS CH0344AWT</b>	25mL	0.5mL	0.50mL	Each
<b>EIS CH0344B</b>	<b>EIS CH0344BWT</b>	50mL	1.0mL	1.00mL	Each
<b>EIS CH0344C</b>	<b>EIS CH0344CWT</b>	100mL	1.0mL	1.00mL	Each
<b>EIS CH0344D</b>	<b>EIS CH0344DWT</b>	250mL	2.0mL	2.00mL	Each
<b>EIS CH0344E</b>	<b>EIS CH0344EWT</b>	500mL	5.0mL	5.00mL	Each
<b>EIS CH0344F</b>	<b>EIS CH0344FWT</b>	1000mL	10.0mL	10.00mL	Each
<b>EIS CH0344G</b>	<b>EIS CH0344GWT</b>	2000mL	20.0mL	20.00mL	Each

## Low Form Glass Beakers

- Low form with spout made from borosilicate glass
- Graduated as per DIN 12231 ISO 3819

ITEM #	CAPACITY	DIAMETER	HEIGHT	QUANTITY
<b>EIS CH0126A</b>	5mL	22mm	30mm	Each
<b>EIS CH0126B</b>	10mL	26mm	35mm	Each
<b>EIS CH0126C</b>	25mL	34mm	50mm	Each
<b>EIS CH0126D</b>	50mL	42mm	60mm	Each
<b>EIS CH0126E</b>	100mL	50mm	70mm	Each
<b>EIS CH0126F</b>	150mL	60mm	80mm	Each
<b>EIS CH0126G</b>	250mL	68mm	95mm	Each
<b>EIS CH0126H</b>	400mL	80mm	110mm	Each
<b>EIS CH0126I</b>	500mL	83mm	115mm	Each
<b>EIS CH0126J</b>	600mL	90mm	125mm	Each
<b>EIS CH0126J8</b>	800mL	100mm	135mm	Each
<b>EIS CH0126K</b>	1,000mL	105mm	145mm	Each
<b>EIS CH0126L</b>	2,000mL	130mm	185mm	Each
<b>EIS CH0126M</b>	3,000mL	150mm	210mm	Each
<b>EIS CH0126N</b>	5,000mL	170mm	270mm	Each
<b>EIS CH0126O</b>	10,000mL	217mm	350mm	Each



FAX 800.359.8807



WEB MercedesScientific.com





EIS ECH0139E



EIS ECH0139D



EIS ECH0139C



EIS CH0357D



EIS CH0357C



EIS CH0357B



EIS CH0357L



EIS CH0357J



EIS CH0357I

## Polypropylene Beakers

- Excellent clarity and very good chemical resistance
- Autoclavable with easy to read printed graduations



EIS ECH0139B

ITEM #	DESCRIPTION	QUANTITY
<b>EIS ECH0139B</b>	100 x 10mL	Each
<b>EIS ECH0139C</b>	250 x 25mL	Each
<b>EIS ECH0139D</b>	600 x 50mL	Each
<b>EIS ECH0139E</b>	1,000 x 50mL	Each
<b>EIS ECH0139F</b>	2,000 x 100mL	Each

## Screen Printed Measuring Jugs

- Made of polypropylene, autoclavable and screen printed
- Short form transparent jugs and have good chemical resistance
- Provided with non-drip spout and excellent thumb grip on handle



EIS CH0357A

ITEM #	DESCRIPTION	QUANTITY
<b>EIS CH0357A</b>	100 x 10mL	Each
<b>EIS CH0357B</b>	250 x 25mL	Each
<b>EIS CH0357C</b>	600 x 50mL	Each
<b>EIS CH0357D</b>	1,000 x 50mL	Each
<b>EIS CH0357E</b>	2,000 x 100mL	Each

## TPX Measuring Jugs

- Short form transparent jugs and have good chemical resistance
- Provided with non-drip spout and excellent thumb grip on handle



EIS CH0357I

ITEM #	DESCRIPTION	QUANTITY
<b>EIS CH0357I</b>	100 x 10mL	Each
<b>EIS CH0357J</b>	250 x 25mL	Each
<b>EIS CH0357K</b>	600 x 50mL	Each
<b>EIS CH0357L</b>	1,000 x 50mL	Each
<b>EIS CH0357M</b>	2,000 x 100mL	Each







EIS CH0430C

## Conical Erlenmeyer Flasks

- Made of borosilicate glass with a Teflon liner screw cap

ITEM #	DESCRIPTION	QUANTITY
<b>EIS CH0430B</b>	50mL	12/Pack
<b>EIS CH0430C</b>	100mL	12/Pack
<b>EIS CH0430D</b>	250mL	6/Pack
<b>EIS CH0430E</b>	500mL	6/Pack
<b>EIS CH0430F</b>	1,000mL	4/Pack

### NARROW-NECK

- Made of borosilicate glass as per DIN ISO 1773 standard



EIS CH0424F

ITEM #	DESCRIPTION	QUANTITY
<b>EIS CH0424B</b>	25mL	Each
<b>EIS CH0424C</b>	50mL	Each
<b>EIS CH0424D</b>	100mL	Each
<b>EIS CH0424E</b>	150mL	Each
<b>EIS CH0424E01</b>	200mL	Each
<b>EIS CH0424F</b>	250mL	Each
<b>EIS CH0424F01</b>	300mL	Each
<b>EIS CH0424G</b>	500mL	Each
<b>EIS CH0424H</b>	1,000mL	Each
<b>EIS CH0424I</b>	2,000mL	Each
<b>EIS CH0424J</b>	3,000mL	Each
<b>EIS CH0424K</b>	5,000mL	Each

### WIDE-NECK

- Made of borosilicate glass as per DIN ISO 24450 standard



EIS CH0426B

ITEM #	DESCRIPTION	QUANTITY
<b>EIS CH0426A02</b>	25mL	Each
<b>EIS CH0426A03</b>	50mL	Each
<b>EIS CH0426A</b>	100mL	Each
<b>EIS CH0426B</b>	250mL	Each
<b>EIS CH0426C</b>	500mL	Each
<b>EIS CH0426D</b>	1,000mL	Each
<b>EIS CH0426E</b>	2,000mL	Each



## Reagent Bottles

- Made of borosilicate glass with autoclavable screw cap (GL 45)
- Pouring ring for drip free pouring and clean, safe working
- As per DIN ISO 4796-1 standard

### CLEAR



EIS CH0164D

EIS CH0165E

ITEM #	DESCRIPTION	QUANTITY
<b>EIS CH0164A</b>	100mL	Each
<b>EIS CH0164B</b>	250mL	Each
<b>EIS CH0164C</b>	500mL	Each
<b>EIS CH0164D</b>	1,000mL	Each
<b>EIS CH0164E</b>	2,000mL	Each

### AMBER



EIS CH0164B

EIS CH0165B

ITEM #	DESCRIPTION	QUANTITY
<b>EIS CH0165A</b>	100mL	Each
<b>EIS CH0165B</b>	250mL	Each
<b>EIS CH0165C</b>	500mL	Each
<b>EIS CH0165D</b>	1,000mL	Each
<b>EIS CH0165E</b>	2,000mL	Each



## Wash Bottles

### LABELED

- Made of low density polyethylene (LDPE) and self venting
- Printed wash bottles are easy to read
- Color coded to prevent cross contamination

ITEM #	CHEMICAL	CAPACITY	QUANTITY
<b>EIS CH0179A</b>	Acetone	500mL	Each
<b>EIS CH0179B</b>	Distilled Water	500mL	Each
<b>EIS CH0179C</b>	Isopropanol	500mL	Each
<b>EIS CH0179D</b>	Ethanol	500mL	Each
<b>EIS CH0179E</b>	Methanol	500mL	Each
<b>EIS CH0179F</b>	Sodium Hypochlorite	500mL	Each
<b>EIS CH0179G</b>	Acetone	1,000mL	Each
<b>EIS CH0179H</b>	Distilled Water	1,000mL	Each
<b>EIS CH0179I</b>	Isopropanol	1,000mL	Each
<b>EIS CH0179J</b>	Ethanol	1,000mL	Each
<b>EIS CH0179K</b>	Methanol	1,000mL	Each
<b>EIS CH0179L</b>	Sodium Hypochlorite	1,000mL	Each



EIS CH0179A



EIS CH0179D



EIS CH0179E



EIS CH0179F



EIS CH0178B



EIS CH0178C



EIS CH0180B



EIS CH0180C



EIS CH0181A



EIS CH0181B

## Wash Bottles

### REGULAR

- Polyethylene, translucent and unbreakable
- Graduated on the outer surface to give an approximate idea about the volume of solution filled or dispensed

ITEM #	DESCRIPTION	QUANTITY
<b>EIS CH0178A</b>	125mL	Each
<b>EIS CH0178B</b>	250mL	Each
<b>EIS CH0178C</b>	500mL	Each

### ECONOMY

- Polyethylene, translucent and unbreakable
- Cap is fitted with a flexible polyethylene delivery tube which can be aimed wherever required

ITEM #	DESCRIPTION	QUANTITY
<b>EIS CH0180A</b>	125mL	Each
<b>EIS CH0180B</b>	250mL	Each
<b>EIS CH0180C</b>	500mL	Each
<b>EIS CH0180D</b>	1,000mL	Each

### PREMIUM

- Made of LDPE, translucent and unbreakable
- Ideal for leak-proof dispensing of liquids

ITEM #	DESCRIPTION	QUANTITY
<b>EIS CH0181A</b>	125mL	Each
<b>EIS CH0181B</b>	250mL	Each
<b>EIS CH0181C</b>	500mL	Each
<b>EIS CH0181D</b>	1,000mL	Each





# Pipette Stands

## WOODEN, POLISHED

- CH0589: 23cm Height, 26cm Width, 12cm Depth
- CH0590A/CH0590B: 41cm Height, 36cm Width, 11cm Depth

ITEM #	DESCRIPTION	QUANTITY
<b>EIS CH0589</b>	Holds 12 Pipets Horizontally	Each
<b>EIS CH0590A</b>	Holds 24 Pipets Vertically	Each
<b>EIS CH0590B</b>	Holds 10 Pipets Vertically	Each



EIS CH0590A

## HORIZONTAL

- Polypropylene and autoclavable
- Can hold 12 pipettes, 6 on each side, in a horizontal position
- Stand has two sides are attached to each other with three metallic rods coated with polypropylene
- Can easily be dismantled for space saving

ITEM #	DESCRIPTION	QUANTITY
<b>EIS CH0592</b>	Pipette Stand - Horizontal	Each

## VERTICAL

- Top disc that can be fixed on the rod has holes for holding pipettes while the lower one has pilot holes where the pipette tips rest and liquid drains down to the base
- Discs can be adjusted on the rod according to the pipette's length
- Arrows provided on the discs should be kept parallel to ensure that corresponding holes are being centered

ITEM #	DESCRIPTION	QUANTITY
<b>EIS CH0594</b>	Pipette Stand - Vertical	Each



EIS CH0594



EIS CH0592



EIS CH0590B



EIS CH0589

## Carboys (HDPE)

- Standardized industrial packaging design
- Ideal for use in everyday laboratory practices
- Features comfortable handles and secure seal caps
- Conform to UN regulations on transport of dangerous liquids

ITEM #	DESCRIPTION	ITEM #	DESCRIPTION
<b>GLO 601780</b>	2L Bottle	<b>GLO 601782</b>	10L Bottle
<b>GLO 601781</b>	5L Bottle	<b>GLO 601783</b>	20L Bottle

### WITH SPIGOT

- Feature very thick walls but retain transparency
- Carboy bottles can be used in sub-zero temperatures
- Designed for lifetime service
- Spigot and deep thread in aspirator for total leak-proof performance

ITEM #	DESCRIPTION	ITEM #	DESCRIPTION
<b>GLO 601660</b>	5L Bottle	<b>GLO 601664</b>	25L Bottle
<b>GLO 601662</b>	10L Bottle	<b>GLO 601666</b>	50L Bottle



## Parafilm® Wrapping film

- Minimal moisture loss and offers excellent barrier protection
- Thermoplastic flexible plastic for a variety of clinical applications
- Waterproof, moisture-proof film prevents sample evaporation and contamination while protecting anhydrous materials
- Fold repeatedly and twist around sharp surface without rupturing
- Increases approximately 200% when stretched lengthwise at 70°F
- Partially returns to original length when tension is removed
- Becomes more flexible and softer as temperature increases
- Ideal for working with culture media
- Rolls are interlined with paper to prevent adhering
- Packaged in cardboard dispensing cartons

ITEM #	DESCRIPTION	QUANTITY
<b>FIS 1337416</b>	PM992, 2" (5cm) x 250 ft	Roll
<b>FIS 1337410</b>	PM996, 4" (10cm) x 125 ft	Roll
<b>FIS 1337412</b>	PM999, 4" (10cm) x 250 ft	Roll



FAX 800.359.8807



WEB MercedesScientific.com



# Centrifuge Tubes

## RESEARCH GRADE

- Sterile tubes are RNase, DNase and Pyrogen Free
- **Attached Red Screw Caps (Sterile Tubes Only)**
  - Flat-top, plug-seal, leak resistant
  - Made of high density polyethylene (HDPE)
- Printed white graduation marks
- Large white writing area
- **Spin Rates:**
  - **Polystyrene (PS): 1700 RCF (3000 x g)**
  - **Acrylic (AC): 5000 RCF (6,160 x g)**
  - **Polypropylene (PP): 10,000 RCF (12,320 x g)**

### PS, 15mL, 17mm x 120mm

ITEM #	DESCRIPTION	QUANTITY
<b>GLO 6268</b>	Non-Sterile, Separate Red Cap	500/Case
<b>GLO 6272</b>	Sterile, 25/Bag, 20 Bags/Case	500/Case
<b>GLO 6274</b>	Sterile, 50/Rack, 10 Racks/Case	500/Case

### AC, 15mL, 17mm x 120mm

ITEM #	DESCRIPTION	QUANTITY
<b>GLO 6267</b>	Non-Sterile, Separate Red Cap	500/Case
<b>GLO 6270</b>	Sterile, 25/Bag, 20 Bags/Case	500/Case
<b>GLO 6273</b>	Sterile, 50/Rack, 10 Racks/Case	500/Case

### PP, 15mL, 17mm x 120mm

ITEM #	DESCRIPTION	QUANTITY
<b>GLO 6264</b>	Non-Sterile, Separate Red Cap	500/Case
<b>GLO 6269</b>	Sterile, 25/Bag, 20 Bags/Case	500/Case
<b>GLO 6271</b>	Sterile, 50/Rack, 10 Racks/Case	500/Case

### PP, 50mL, 29.5mm x 114mm

ITEM #	DESCRIPTION	QUANTITY
<b>GLO 6240</b>	Non-Sterile	500/Case
<b>GLO 6241</b>	Sterile, 25/Bag, 20 Bags/Case	500/Case
<b>GLO 6243</b>	Sterile, 25/Rack, 20 Racks/Case	500/Case

### PS, 50mL, 29.5mm x 114mm

ITEM #	DESCRIPTION	QUANTITY
<b>GLO 6253</b>	Non-Sterile, Separate Red Cap	500/Case
<b>GLO 6254</b>	Sterile, 25/Bag, 20 Bags/Case	500/Case
<b>GLO 6254R</b>	Sterile, 25/Rack, 20 Racks/Case	500/Case



# Centrifuge Tubes

## CLINICAL GRADE

- Manufactured from a special grade of polypropylene
- Exceptional clarity and chemical stability
- Disposable, conical-bottom tubes are autoclavable (without caps)
- Large white writing area for sample identification
- **Attached Blue Screw Caps (Sterile Tubes Only)**
  - Flat top, leak resistant tight seal
  - Made of high density polyethylene (HDPE)
- Black printed graduations in 0.5mL increments
- **Spin Rate: 8500 RCF**
- **Temperature Range: -10°C to +80°C**

## 15mL, 17mm x 120mm

ITEM #	DESCRIPTION	QUANTITY
<b>GLO 6284</b>	Non-Sterile, Separate Blue Cap	500/Case
<b>GLO 6285</b>	Sterile, 25/Bag, 20 Bags/Case	500/Case
<b>GLO 6286</b>	Sterile, 50/Rack, 10 Racks/Case	500/Case

## 50mL, 30mm x 115mm

ITEM #	DESCRIPTION	QUANTITY
<b>GLO 6287</b>	Non-Sterile, Separate Blue Cap	500/Case
<b>GLO 6288</b>	Sterile, 25/Bag, 20 Bags/Case	500/Case
<b>GLO 6289</b>	Sterile, 25/Rack, 20 Racks/Case	500/Case



# Culture Tubes

- Ideal for blood banks, tissue culture and clinical chemistry
- Premium quality glass for excellent chemical resistance
- Well-rounded, uniform bottoms and smooth, fire-polished rims
- Made from superior quality borosilicate glass to reduce pH changes and contaminants possibly leached from soda lime glass tubes
- Packaged in heavy-duty boxes of 250 and shrink wrapped in plastic film to keep particle free; helps prevent breakage during shipment

## PACKAGED 1000/CASE

ITEM #	DESCRIPTION	ITEM #	DESCRIPTION
<b>GLO 1503</b>	10 x 75mm, 3mL	<b>GLO 1512</b>	16 x 100mm, 10mL
<b>GLO 1505</b>	12 x 75mm, 5mL	<b>GLO 1515</b>	16 x 125mm, 12mL
<b>GLO 1510</b>	13 x 100mm, 7mL	<b>GLO 1517</b>	16 x 150mm, 15mL







STO 3220



STO 3261

## 15mL Screw Cap Centrifuge Tubes

- **Premium Quality:** general purpose tubes with molded or printed graduations
- **Easy to Read:** large writing area on printed tubes makes identification simple
- **Superior Clarity and Durability:** available in polystyrene or polypropylene
- **Polystyrene (PS):** glass-like clarity, withstands 1800 RCF
- **Co-Polymer (PP-CO):** excellent chemical resistance, withstands 6400 RCF
- **Packaging:** available in bulk, bag pack or expanded styrene foam trays
- **Sterility:** available non-sterile or sterilized by gamma irradiation
- **Leakproof Seal:** molded in seal-ring ensures a leakproof seal without the contamination problems associated with cap liners

### STERILE, ATTACHED BLUE SCREW CAPS

ITEM #	DESCRIPTION	QUANTITY
<b>STO 3215</b>	Molded Graduations, PS, 10 Trays of 50	500/Case
<b>STO 3215P</b>	Printed Graduations, PS, 10 Trays of 50	500/Case
<b>STO 3216</b>	Molded Graduations, PP-CO, 10 Trays of 50	500/Case
<b>STO 3216P</b>	Printed Graduations, PP-CO, 10 Trays of 50	500/Case
<b>STO 3217</b>	Molded Graduations, PS, 20 Bags of 25	500/Case
<b>STO 3217P</b>	Printed Graduations, PS, 20 Bags of 25	500/Case
<b>STO 3218</b>	Molded Graduations, PP-CO, 20 Bags of 25	500/Case
<b>STO 3218P</b>	Printed Graduations, PP-CO, 20 Bags of 25	500/Case

### NON-STERILE, BLUE SCREW CAPS IN SEPARATE BAG

ITEM #	DESCRIPTION	QUANTITY
<b>STO 3219</b>	Molded Graduations, PS	500/Bag
<b>STO 3219P</b>	Printed Graduations, PS	500/Bag
<b>STO 3220</b>	Molded Graduations, PP-CO	500/Bag
<b>STO 3220P</b>	Printed Graduations, PP-CO	500/Bag

## Free Standing Centrifuge Tubes

- Blue screw caps in separate bag
- Ideal for biological sample collection, storage and safety
- Manufactured from virgin polypropylene and chemically inert materials
- Screw caps include molded-in sealing ring for a leakproof fit
- Autoclavable tubes include write-on area on side

ITEM #	DESCRIPTION	QUANTITY
<b>STO 3241</b>	30mL, Transport Vial, PP-CO	500/Case
<b>STO 3261</b>	50mL, Transport Vial, PP-CO	500/Case



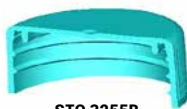
STO 3250



STO 3250P



STO 3225B



STO 3225B

## 50mL Screw Cap Centrifuge Tubes

- **Approved rated at 10,000 RCF**
- Printed tubes feature blue silk-screened graduations for better visibility with a large writing patch that allows for easy sample identification
- Tested for optimum performance and desired clarity in lab procedures
- Select from expanded polystyrene foam trays for oriented sterile product or bulk-packaged products that reduce packaging materials up to 40%

### STERILE, ATTACHED BLUE SCREW CAPS

ITEM #	DESCRIPTION	QUANTITY
<b>STO 3250</b>	Molded Graduations, 20 Trays of 25	500/Case
<b>STO 3250P</b>	Printed Graduations, 20 Trays of 25	500/Case
<b>STO 3252</b>	Molded Graduations, 20 Bags of 25	500/Case
<b>STO 3252P</b>	Printed Graduations, 20 Bags of 25	500/Case

### NON-STERILE, ATTACHED BLUE SCREW CAPS

ITEM #	DESCRIPTION	QUANTITY
<b>STO 3253</b>	Molded Graduations, 20 Trays of 25	500/Case
<b>STO 3253P</b>	Printed Graduations, 20 Trays of 25	500/Case
<b>STO 3254</b>	Molded Graduations, 20 Bags of 25	500/Case
<b>STO 3254P</b>	Printed Graduations, 20 Bags of 25	500/Case

### NON-STERILE, SCREW CAPS IN SEPARATE BAG

ITEM #	DESCRIPTION	QUANTITY
<b>STO 3251</b>	Molded Graduations, Blue Cap	500/Bag
<b>STO 3251P</b>	Printed Graduations, Blue Cap	500/Bag
<b>STO 3251N</b>	Molded Graduations, Natural Cap	500/Bag
<b>STO 3251X</b>	Molded Graduations, No Cap	500/Bag

## 15mL & 50mL Screw Caps

- Molded-in sealing ring envelops the tube wall to prevent liquid bypass and provides a positive stop for the cap
- Continuous 1.5-turn threads help secure the cap with easier opening/closing
- Quality control protocols include gravity and vacuum chamber testing to ensure the seal integrity is maintained; not autoclavable

ITEM #	DESCRIPTION	ITEM #	DESCRIPTION	QUANTITY
<b>STO 3225B</b>	15mL, Blue	<b>STO 3255B</b>	50mL, Blue	500/Bag
<b>STO 3225N</b>	15mL, Natural	<b>STO 3255N</b>	50mL, Natural	500/Bag





## Microcentrifuge Tubes

### WITH SCREW CAPS & GRADUATIONS

- Ideal for routine laboratory analysis and procedures
- Available in conical bottom or skirted bottom
- **Natural Tubes with Capacity:** 0.5mL / 1.5mL / 2.0mL
- **Cap Colors:** Natural, Blue, Green, Lavender, Orange, Red, White, Yellow

CONICAL	SKIRTED	DESCRIPTION	QUANTITY
<b>STO 3302S</b>	<b>STO 3303S</b>	0.5mL, O-Ring Cap, Sterile, 5 Bags of 100	500/Case
<b>STO 3302X</b>	<b>STO 3303X</b>	0.5mL, 2 Bags of 500	1,000/Case
<b>STO 3304S</b>	<b>STO 3305S</b>	1.5mL, O-Ring Cap, Sterile, 5 Bags of 100	500/Case
<b>STO 3304X</b>	<b>STO 3305X</b>	1.5mL, 2 Bags of 500	1,000/Case
<b>STO 3306S</b>	<b>STO 3307S</b>	2.0mL, O-Ring Cap, Sterile, 5 Bags of 100	500/Case
<b>STO 3306X</b>	<b>STO 3307X</b>	2.0mL, 2 Bags of 500	1,000/Case

### TUBE SPECIFICATIONS

- **Max. Force (RCF):** 18,000
- **Brittleness Temperature:** -40°C
- **Max. Temperature:** 121°C
- **Material:** PP-CO
- **Max. Volume**  
3302/3303: 0.65mL  
3304/3305: 1.75mL  
3306/3307: 2.0mL

### MOLDED SEAL RING CAPS (STO 3310)

- Polypropylene-copolymer caps and tubes are fully autoclavable while o-ringed caps are not autoclavable
- **Packaged 1,000/Case**

### O-RING CAPS (STO 3312)

- Internal sealing ring sandwiches the tube's top for a positive seal to stop liquid bypass
- Continuous threads require only a 1¼ turn to tighten
- Exceptional chemical resistance while further enhancing the seal's integrity
- **Packaged 1,000/Case**

O-RING CAPS  
STO 3312



MOLDED SEAL  
RING CAPS  
STO 3310



## Microcentrifuge Tubes

### WITH ATTACHED SNAP CAPS

- Polypropylene tubes with flat-top for writing name of sample
- Writing area on its side for tracking and measuring volumes
- Certified free of detectable RNase, DNase and Pyrogens
- **Colors Available:** Natural, Blue, Green, Lavender, Orange, Pink, Yellow, Amber, Assorted

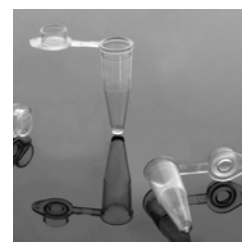
ITEM #	DESCRIPTION	QUANTITY
<b>STO 8505</b>	400µL	1,000/Bag
<b>STO 8507</b>	0.5mL	1,000/Bag
<b>STO 8509</b>	1.5mL (30,000 RCF)	1,000/Bag
<b>STO 8510</b>	1.5mL (18,000 RCF)	1,000/Bag
<b>STO 8520</b>	2.0mL	1,000/Bag



## PCR Tubes

- Made from USP grade VI polypropylene
- Compatible with most thermal cyclers and real-time PCR machines
- Extra-thin walls provide the optimal thermal transfer conditions and shorter cycle times
- Low profile tubes minimize condensate contamination, particularly for the overnight experiment, and reduce evaporation of the reaction solution
- Free of DNase and RNase, human DNA and PCR inhibitor
- Easy to open, leakproof caps reduce the loss of reaction mixture
- Fully and completely autoclavable

ITEM #	DESCRIPTION	QUANTITY
<b>NST 401001</b>	0.2mL PCR Tubes, Flat Caps, Transparent, 1,000/Pack	10,000/Case
<b>NST 403102</b>	0.1mL PCR 8-Strip Tubes, No Cap, Low Profile, Transparent, 125/Pack	1,250/Case
<b>NST 403002</b>	0.2mL PCR 8-Strip Tubes, No Cap, High Profile, Transparent, 125/Pack	1,250/Case
<b>NST 406012</b>	PCR 8-Strip Caps, Flat, Transparent, 125/Pack	1,250/Case
<b>NST 406112</b>	PCR 8-Strip Caps, Domed, Transparent, 125/Pack	1,250/Case



## Test Tubes

- Precision-molded from premium-grade plastics, inspected by quality assurance and ideal for routine laboratory analysis and procedures
- Available in three materials: **Polystyrene (PS)**, **Polypropylene (PP)** or **Polypropylene Co-Polymer (PP-CO)** to prevent broken glass
- Polypropylene is chemically resistant, autoclavable and unbreakable
- Polystyrene is clear like glass
- **Note:** Caps are ordered separately. Tubes are not available sterile.



### ROUND BOTTOM

ITEM #	COLOR	DESCRIPTION	QUANTITY
<b>STO 8501</b>	Clear	17 x 150mm, 20mL, PS, 2 Bags of 250	500/Case
<b>STO 8502</b>	Natural	17 x 150mm, 20mL, PP, 2 Bags of 250	500/Case
<b>STO 8553</b>	Clear	16 x 75mm, 11mL, PS, 2 Bags of 500	1,000/Case
<b>STO 8554</b>	Natural	16 x 75mm, 11mL, PP, 2 Bags of 500	1,000/Case
<b>STO 8555</b>	Clear	16 x 92mm, 13mL, PS, 2 Bags of 500	1,000/Case
<b>STO 8556</b>	Natural	16 x 92mm, 13mL, PS, 2 Bags of 500	1,000/Case
<b>STO 8560</b>	Clear	12 x 75mm, 5mL, PS, 8 Bags of 250	2,000/Case
<b>STO 8561</b>	Clear	12 x 75mm, 5mL, PS, 8 Bags of 250	2,000/Case
<b>STO 8562</b>	Natural	12 x 75mm, 5mL, PP, 8 Bags of 250,	2,000/Case
<b>STO 8563</b>	Natural	12 x 75mm, 5mL, PP, 8 Bags of 250,	2,000/Case
<b>STO 8570</b>	Clear	13 x 100mm, 8mL, PS, 8 Bags of 250	2,000/Case
<b>STO 8572</b>	Natural	13 x 100mm, 8mL, PP, 8 Bags of 250	2,000/Case
<b>STO 8580</b>	Clear	12 x 55mm, 3mL, PS, 4 Bags of 500	2,000/Case
<b>STO 8582</b>	Natural	12 x 55mm, 3mL, PP, 4 Bags of 500	2,000/Case
<b>STO 8583</b>	Clear	16 x 100mm, 14mL, PS, 2 Bags of 500	1,000/Case
<b>STO 8584</b>	Natural	16 x 100mm, 14mL, PP, 2 Bags of 500	1,000/Case
<b>STO 8590</b>	Clear	17 x 100mm, 16mL, PS, 2 Bags of 500	1,000/Case
<b>STO 8592</b>	Natural	17 x 100mm, 16mL, PP-CO, 2 Bags of 500	1,000/Case
<b>STO 8593</b>	Clear	16 x 125mm, 19mL, PS, 4 Bags of 250	1,000/Case
<b>STO 8594</b>	Natural	16 x 125mm, 19mL, PP, 4 Bags of 250	1,000/Case

### CONICAL BOTTOM

ITEM #	COLOR	DESCRIPTION	QUANTITY
<b>STO 8550</b>	Clear	12 x 75mm, 5mL, PS, Clear, 8 Bags of 250	2,000/Case
<b>STO 8552</b>	Natural	12 x 75mm, 5mL, PP, Natural, 8 Bags of 250	2,000/Case



## Sterile Culture Tubes

- Manufactured with strict standards to guarantee high performance
- Ideal for routine laboratory analysis and procedures
- Choose translucent **Polypropylene (PP)** for chemical and temperature resistance or **Polystyrene (PS)** for superior optical clarity
- Available with printed graduations and marking area
- Precision manufactured tubes are fitted with 2-position caps

ITEM #	DESCRIPTION	QUANTITY
<b>STO 8567</b>	12 x 75mm, 5mL, PS, 8 Bags of 125	1,000/Case
<b>STO 8576</b>	12 x 75mm, 5mL, PS, 20 Bags of 25	500/Case
<b>STO 8568</b>	12 x 75mm, 5mL, PP, 8 Bags of 125	1,000/Case
<b>STO 8586</b>	12 x 75mm, 5mL, PP, 20 Bags of 25	500/Case
<b>STO 8597</b>	17 x 100mm, 16mL, PS, 20 Bags of 25	500/Case
<b>STO 8599</b>	17 x 100mm, 16mL, PP, 20 Bags of 25	500/Case



### TWO-POSITION SNAP CAPS

- Made of low-density polyethylene (LDPE)
- Ideal for resealing glass test tubes and glass culture tubes
- Provides either aerobic or anaerobic storage of culture samples
- Specifically designed for optimal reliability and containment

ITEM #	DESCRIPTION	QUANTITY
<b>STO 8566</b>	12mm, Natural, 2-Position Cap	1,000/Bag
<b>STO 8596</b>	17mm, Natural, 2-Position Cap	1,000/Bag



## Self Standing Sample Tubes

- Designed for the storage and transportation of biological material
- Manufactured from non-toxic polypropylene for strength and clarity
- Smooth, uniform inner surface reduces the risk of contamination

### SCREW CAPS (SOLD SEPARATELY)

- **Colors:** Natural, Gray, Blue, Green, Lilac, Orange, Red, Yellow, White
- Provides the same coefficient of expansion as the tubes
- Inner lip ensures a leakproof seal, even at changing temperatures
- Long skirt and super-fast thread design for one turn removal or seal

ITEM #	DESCRIPTION	QUANTITY
<b>GLO 6059</b>	5mL, Round Bottom, PP	1,000/Bag
<b>GLO 6136</b>	Screw Cap for GLO 6059	1,000/Bag



GLO 6059

## Transport Test Tubes

- **Polystyrene (PS)** tubes withstand 1500 rpm during centrifugation while **Polypropylene (PP)** tubes withstand 3000 rpm centrifugation and are autoclavable
- Molded from premium grade polystyrene for clarity or polypropylene for impact strength and stability to common acids, alkalis or solvents
- **Caps Sold Separately\***

ITEM #	DESCRIPTION	QUANTITY
<b>GLO 110409*</b>	12 x 75mm, 5mL, PS, Clear	2,000/Case
<b>GLO 110405</b>	12 x 75mm, 5mL, PS, Separate Dual Position Snap Cap	1,000/Case
<b>GLO 110441*</b>	12 x 75mm, 5mL, PP, Natural	1,000/Bag



GLO 110405



GLO 110441

## Dual Position Closures

- Made of low-density polyethylene (LDPE) and ribbed for easy handling
- Creates a leak-resistant seal when snapped into tube
- Provide aerobic and anaerobic storage of culture samples

ITEM #	DESCRIPTION	QUANTITY
<b>GLO 118120</b>	12mm, Natural	1,000/Bag
<b>GLO 118118</b>	17mm, Natural	1,000/Bag



GLO 118118

## Wire Drying Rack

- Holds 90 pieces of labware on 18 x 127mm pins and 72 x 76mm pins
- Constructed of spot-welded, vinyl-coated steel wire for durability
- Easily accessible and removable bottom drainage pan
- Saves glassware from chips and cracks
- Drain and dry test tubes, beakers, flasks and other labware
- Place self-standing rack on a table, countertop or near a sink, or use hooks to hang rack on the wall

• **Overall Dimensions:** 462 x 182 x 525 mm

ITEM #	DESCRIPTION	QUANTITY
<b>HEA HD23243A</b>	Wire Drying Rack for Labware	Each



## Universal Safety Filler Bulb

- Silicone conical adapter creates a tight seal without twisting
- Pipette will never come in contact with the hard plastic to eliminate the risk of cracking and chipping
- Use the supplied elastic band for hanging on reagent bottles or wrist
- For use with standard size pipettes up to 25mL in capacity

ITEM #	DESCRIPTION	QUANTITY
<b>GLO 1672</b>	Synthetic Rubber, Red/White	Each



## Triple Timer/Clock

- Three channels to count up/down with
- Simultaneous display, time-out and 60 second audible alarm
- Channels may be started independently or simultaneously
- Timer automatically counts

• **Dimensions:** 86 x 66 x 22 mm

ITEM #	DESCRIPTION	QUANTITY
<b>HEA HD24490M</b>	Triple Timer/Clock	Each





## Model 642E Centrifuge

- Compact, single-speed horizontal centrifuge
- Designed specifically for blood separation ideally in reference labs, hospital outreach and blood collection sites
- Unit arrives ready for use with rotor and holds up to six tubes from microtubes (0.5mL) up to 17 x 100mm (10mL)
- Preset run time of 10 minutes at 1,600 x g g-force; settings can be changed if desired but are not designed for frequent adjustment
- Easy one-button operation assures high quality, repeatable analytic results every time
- Clear lid enables sample observation and optical calibration
- **Brushless AC Motor:** smooth operation, no routine maintenance
- **Maximum G-Force:** 1600 RCF, **Maximum Speed:** 3380 RPM
- **Dimensions:** 11" x 16" x 13"

ITEM #	DESCRIPTION	QUANTITY
DRK 642E	Model 42E Centrifuge	Each

### Automatic Lid Lock

Centrifuge will not run with the lid open. Lid cannot be opened while samples are spinning.

### Clear Shatter Proof Lid

Allows for safe sample observation, optical calibrations and access for photo tachometer.

### Positive Lid Latching

Firm mechanical latching of the lid prevents the escape of debris in case of tube breakage.

### Reinforced Guard Bowl:

Provides maximum safety and durability

### Quiet Operation:

Double-encased motor and the "stability mount" design provides excellent imbalance stability.

### Cool Operation:

Unique design of the convection based cooling system protects the samples even under the heaviest workloads.

### Small Footprint:

Compact design uses about 1 square foot of counter space.





E8 FIXED-SPEED CENTRIFUGE

## E8 Series Centrifuges

- High speeds for faster and cleaner blood separations
- Quieter operation for peaceful work environments
- Lower chamber temperatures for cooler test-tube samples
- Auto-calibrating function for precision speeds
- 8-place angled rotor holds 3mL to 15mL size tubes
- 3,500 rpm fixed speed with auto-off 30-minute timer and bell
- Clear view port in lid for using tachometer
- Suction-cupped feet prevent slipping
- **Includes:** 8-Place Angled Rotor, (8) 13 x 75mm Tube Sleeve Inserts, (8) 15mL Tube Sleeves, **Car Seat & Adapter (Portafuge Only)**
- **Dimensions:** 9.5" x 11" x 11"
- Designed, engineered, and proudly assembled at LW Scientific's ISO-certified, FDA-registered manufacturing facility in America

ITEM #	DESCRIPTION	QUANTITY
<b>LWS E8CU8AF1503</b>	E8 Fixed-Speed Centrifuge	Each
<b>LWS E8CU8AF150P</b>	E8 Fixed-Speed Portafuge	Each



VIEW PORT LID



ROTOR



PORTAFUGE

### Please Note:

Portable *E8 Portafuge* is designed for spinning on the go. Simply place the centrifuge into the included car seat, strap the car seat into your vehicle, and insert the power outlet cord into your car's 12v power outlet.







## ComboXL Centrifuge

- Horizontal separation offers many advantages over traditional fixed-angle separations, including tighter straight-line gel separations to reduce re-spins and re-mixes
- Spins test tubes from 3mL to 15mL, and even 50mL, at speeds up to 4,000 rpm, with microprocessor speed control
- Simply program the digital time and speed, centrifuge will lock the lid and spin the load
- G-forces up to 2,683g's will produce serum in minutes, or reduce the speed for urine sediment and other separations
- Zero-rpm interlocking metal lid will stay locked until the rotor stops, to ensure safety
- All-metal rotor buckets are built for strength and durability
- Wide-mouth metal bowl are easy to clean
- Whisper-quiet heavy-duty brushless DC motor can handle high volume use and high-speed full loads for years to come
- **Includes:** 3-Prong Power Cord, **(4) 4-Place 3mL-6mL Rotor Inserts** (16 Tube Capacity; Max Size: 18 x 125mm), **(4) 3-Place 6mL-15mL Rotor Inserts** (12 Tube Capacity; Max Size: 13.5 x 90mm), **(4) 50mL Rotor Inserts** (4 Tube Capacity; Max Size: 30 x 125mm)

ITEM #	DESCRIPTION	QUANTITY
LWS CMC16SD50T3	ComboXL Centrifuge	Each



SIDE VIEW



BACK VIEW



3-6mL ROTOR



6-15mL ROTOR



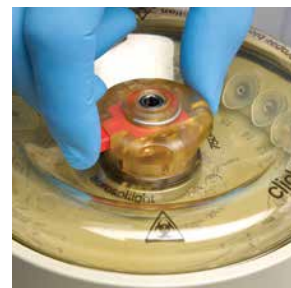
50mL ROTOR



Thermo Scientific®

## Sorvall™ Legend™ Micro 21 Microcentrifuge

- Delivers the perfect blend of capabilities to support micro-volume protocols such as nucleic acid or protein lysate preparation and PCR reaction set-up - all in a remarkably small footprint
- Sleek, lightweight, space-saving footprint and rugged design
- Exceptional acceleration up to 21,000 x g in 12 seconds
- Holds 36 x 0.5mL microtubes, 24 x 2mL tubes or 8 x 8 PCR strips
- ClickSeal™ biocontainment rotor lid "clicks" in place to securely contain samples with improved strength and chemicals resistance
- Transparent rotor lid enables viewing for safety and convenience
- Intuitive controls and easy-to-read display simplifies operation
- Quiet performance provides a safe, stress-free environment
- **Max. Speed:** 14,800rpm; **Temperature Range:** -9° to +40°C, ±1°
- **Time Set Range:** 1 - 99 min; ±1 min increments + HOLD mode
- **Dimensions:** 13-3/4"L x 9-5/8"W x 8-7/8"H; **Weight:** 23 lbs



ITEM #	DESCRIPTION	QUANTITY
FIS 75772436	Micro 21 Microcentrifuge	Each



FAX 800.359.8807



WEB MercedesScientific.com





SII SI1100



SII SID238

## Analog Disruptor Genie®

- Vigorous mechanical cell disruption device
- New and improved design and unique multi-directional action for simultaneous agitation or vortexing
- Dramatically increases the disruption efficiency of disruption beads, glass or zirconia-silica, because of the design of the sample holder
- Rapid hands-free disruption of up to 12 microtubes (1.5 or 2.0mL)
- **Includes:** Universal Microtube Holder (Excludes Tubes), Pop-Off Cup

ITEM #	DESCRIPTION	QUANTITY
SII SID238	Analog Disruptor Genie, 120V	Each

### SPECIFICATIONS

**Weight:** 9.5 lb

**Dimensions (D x W x H):**  
6.5" x 4.8" x 7.5"

**Time Range:** 0-15 minutes  
or continuous

**Speed:** 3000 rpm

## Roto-Shake Genie®

- Combines rocking and rotating in one rugged and versatile design
- Magnetic stainless steel platform and clip plate system holds a variety of container at any angle
- Magnetic strips secure bags for completely uniform soaking and washing of membrane-based blot assays
- **Includes:** 1 Clip Plate Each for 10-13mm Tubes, 15-17mm Tubes & 28-30mm Tubes; (4) Magnetic Bag Mounting Strips, Non-Skid Tray

ITEM #	DESCRIPTION	QUANTITY
SII SI1100	Roto-Shake Genie, 120V	Each

### SPECIFICATIONS

**Rotating:** 5-35 rpm

**Rocking:** 10-70 cycles/min

**Platform Capacity:** 10 lb

**Weight:** 26 lb

**Dimensions (D x W x H):**  
9.9" x 20" x 10.5"



## Laboratory Grade Microwave

- Ideal for staining microscope tissue samples, waste solids testing, moisture testing, chemical processing, agar heating and others
- Up to 1,000 watts of microwave power
- Stainless steel is easy-to-clean and chemical resistant
- Mode stirrer technology for even heating
- Powered cavity exhaust removes fumes
- 5 different power levels plus a hold feature
- **Includes:** 8ft of Flexible Duct, (2) Stainless Steel Clamps, Adaptor (For Exhaust System)

ITEM #	DESCRIPTION	QUANTITY
<b>MRA BP110</b>	Laboratory Microwave	Each



## Digital Heating Shaking Drybath

- Can be used as a drybath, shaker or both to increase lab versatility
- Easily change blocks in multiple sizes for maximum flexibility
- Consistent shaking results and precise temperature control

### SPEED RANGE

- 150 to 1,500 rpm (Block Dependent); **Note: Blocks Sold Separately**

### PROGRAM STORAGE:

- 10 programs, up to 10 steps per program
- Interval shaking function for shaking/non-shaking in same program

### TWO TYPES OF TIMING MODES:

- Start only after temperature reaches desired set point
- Start immediately after the timer is set

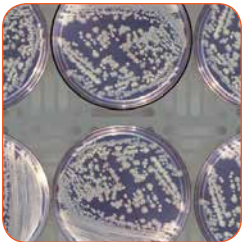
ITEM #	DESCRIPTION	QUANTITY
<b>FIS 11686730</b>	Digital Heating Shaking Drybath	Each





## Incubators

- Ideal for pediatric, physician, and hospital labs requiring better temperature accuracy and a small footprint
- Perfect for cultures, egg incubation, test kits, fluid bag warming and other microbiological uses
- Digital PID microprocessor controls provide better temperature stability and accuracy
- Convection heat for excellent distribution and uniformity
- LED display shows temperature in Celsius or Fahrenheit
- Anodized aluminum and stainless steel components are corrosion resistant and easy to clean
- Visual alarm alerts when actual internal temperature exceeds programmed temperature
- **Includes:** Acrylic See-Through Door, Suction-Cupped Rubber Feet, Adjustable Stainless Steel Shelves
- **Temperature Range:** +2°C to 65°C (150°F)



ITEM #	DESCRIPTION	QUANTITY
LWS ICL010LD031	10L (0.35 Cubic Feet)	Each
LWS ICL020LD071	20L (0.7 Cubic Feet)	Each
LWS ICL030LD101	30L (1.1 Cubic Feet)	Each



## Air-Forced Digital Incubator

- Utilizes a blower and side air plenum design to deliver full horizontal air flow within the chamber
- Gentle cross-air flow offers improved heating capacity and exceptional temperature uniformity of  $\pm 0.75^{\circ}\text{C}$
- Unit comes with 3 adjustable aluminum shelves and spill tray
- Custom-developed for laboratories that need a dependable, compact incubator for cultures, test kits, eggs and biologicals
- Ideal for large or higher-density loads (multiple beakers, flasks, petri dishes, etc) requiring faster warm-through times

ITEM #	DESCRIPTION	QUANTITY
<b>QCY 12140AE</b>	Air-Forced Digital Incubator	Each



QCY 12140AE

## Gravity Convection Ovens

- Used for part drying, baking, curing, sterilizing, evaporating, heat treating, annealing and testing
- Models have temperature range to  $232^{\circ}\text{C}$  ( $450^{\circ}\text{F}$ )
- Heavy steel double-wall construction and scratch-resistant hammer finish create a durable, compact design
- Corrosion-resistant aluminized interior while exterior insulates workspace with one inch of high-density mineral wool
- Control panel is equipped with an illuminated ON-OFF rocker switch and a heat/cycle pilot light
- Automatic hydraulic or bimetal thermostat controls temperature
- Perforated heat shield greatly improves temperature uniformity
- Energy-efficient, low-watt density incoloy sheathed elements are engineered for quick run-up and recovery times

ITEM #	DESCRIPTION	QUANTITY
<b>QCY 20GC</b>	<b>Capacity:</b> 1.27 Cubic Feet <b>Interior:</b> 13" x 13" x 13" <b>Exterior:</b> 15" x 21.5" x 15.3"	Each
<b>QCY 30GC</b>	<b>Capacity:</b> 2.0 Cubic Feet <b>Interior:</b> 18" x 15.6" x 12" <b>Exterior:</b> 20" x 25.5" x 14.3"	Each
<b>QCY 40GC</b>	<b>Capacity:</b> 3.0 Cubic Feet <b>Interior:</b> 18" x 21.8" x 14" <b>Exterior:</b> 20" x 31.5" x 16.3"	Each



QCY 20GC



QCY 30GC



## Pioneer® Analytical Balance

- Economical choice of balance for reliable routine weighing applications including parts counting, density determination and percent weighing
- Removable doors provide convenient access and cleaning
- Easy-to-clean draftshield protects samples from contamination
- Backlit LCD makes viewing results easier, even in low light areas
- Selectable environmental settings minimize external influences

ITEM #	DESCRIPTION	QUANTITY
<b>OHA 30208454RM</b>	80g Capacity	Each



## Digital Portion Scales

- Molded poly enclosure with stainless steel commodity tray
- Welded studs on the bottom of the tray fit tightly to weighbridge
- Sealed membrane keypad and 5-digit LCD display
- Powered by (1) 9VDC battery (excluded) or AC adapter

ITEM #	DESCRIPTION	QUANTITY
<b>DET PS4</b>	Capacity: 4lb x 0.1oz	Each



DET PS4

- Molded poly enclosure with stainless steel commodity tray
- Welded studs on the bottom of the tray fit tightly to weighbridge
- Sealed membrane keypad and 5-digit LCD display
- IP52 water resistant enclosure
- Built-in rechargeable battery power

ITEM #	DESCRIPTION	QUANTITY
<b>DET PS7</b>	Capacity: 7lb x 0.1oz	Each



DET PS7

- Switch between 5 different units of measurement
- Main board inside unit is coated in a moisture resistant solution
- Welded studs on the bottom of the tray fit tightly to weighbridge
- IP52 water resistant enclosure
- Built-in rechargeable battery power

ITEM #	DESCRIPTION	QUANTITY
<b>DET PS11</b>	Capacity: 11lb x 0.1oz	Each



DET PS11



## Autoclave Sterilization Pouches

- Triple sealed edges prevent separation or tearing by instruments
- Extra wide chevron seal protects against instrument breaching
- Dual steam and EtO process indicator arrows change color
- Wet strength treated, virgin medical grade paper that meets or exceeds medical pouch standards
- Blue tinted transparent film facilitates both easy instrument viewing and identification of punctures or tears
- Perforated fold facilitates easy, accurate folding of a wide adhesive strip to form airtight seal until pouch is opened
- Six corner tack seals prevent corners from curling following sterilization, and help resist collection of dust and contaminants
- Thumb notch assures easy opening

ITEM #	DESCRIPTION	QUANTITY
<b>PRA P012790</b>	2.75" x 9"	200/Box
<b>PRA P013554</b>	3.5" x 5.25"	200/Box
<b>PRA P013590</b>	3.5" x 9"	200/Box
<b>PRA P015410</b>	5.25" x 10"	200/Box
<b>PRA P017513</b>	7.5" x 13"	200/Box



**GPO**  
DISCOUNTS  
AVAILABLE



## M9 Ultraclave® Autoclave Sterilizers

**SIMPLY LOAD IT, SET IT AND FORGET IT**

- **Chamber Size:** 9" (diameter), 15" (depth), 3.5GL (usable volume)
- Intuitive display and simple prompts help the user to easily select the cycle needed whether it is for unwrapped items, pouches, packs or handpieces
- Once the sterilization process is complete, the door opens automatically and quietly to dissipate steam, providing fast and efficient instrument drying
- The **Steam-Flush Pressure-Pulse Air Removal System** is designed to provide proper steam penetration
- Pre-programmed controls and easy-to-view LCD display
- Convenient self-program controls provide instrument processing flexibility
- Automatic-opening door ensures fast instrument drying
- Front fill and drain tube accesses maintenance and water level monitoring

ITEM #	DESCRIPTION	QUANTITY
<b>MID M9022</b>	M9 UltraClave®, Automatic Door	Each
<b>MID M9D022</b>	M9 UltraClave®, Manual Door	Each







## M11 UltraClave® Automatic Sterilizer

ONE OF THE LARGEST CHAMBER SIZES OF ANY TABLETOP AUTOCLAVE

- **Chamber Size:** 11" (diameter), 18" (depth), 6.5GL (usable volume)
- Optimize sterilization output – reducing time and effort, but not effectiveness
- Preprogrammed cycles can improve convenience and flexibility, and increase confidence for every cycle
- Programmable controls allow the user to change exposure time, temperature, dry time and vent, and store any changes if desired
- Intuitive display and simple prompts for easy operation
- Automatic-open door promotes faster, more efficient instrument drying
- The **Steam-Flush Pressure-Pulse Air Removal System** is designed to provide proper steam penetration
- LCD display alerts if door is not entirely closed or reservoir water level is low
- Reservoir fill port and drain tube in the front for easy draining and filling



ITEM #	DESCRIPTION	QUANTITY
MID M11022	M11 UltraClave®, Automatic Door	Each



FAX 800.359.8807



WEB MercedesScientific.com







## Chamber Brite® Autoclave Cleaner

- Effectively cleans and descales the chamber, reservoir and copper tubing in minutes
- Convenient pre-measured packets requires no pre-mixing
- Designed specifically for steam sterilizers
- Keeps autoclave free of water deposit build-up
- Clean autoclave every 20 cycles or weekly for best results



ITEM #	DESCRIPTION	QUANTITY
TUT CB0010	Chamber Brite®	10/Box

## Autoclave Envelopes

- Self-sealing and come with external color indicators
- Poly layer is sandwiched between two layers of tissue

ITEM #	DESCRIPTION	QUANTITY
TID 5543	2.5" x 8.25", Blue	1,000/Box
TID 5544	3.5" x 9.75", Blue	1,000/Box
TID 5545	6" x 9.75", Blue	500/Box
TID 5549	2.75" x 10", Clear	300/Box
TID 5550	3.25" x 6.5", Clear	200/Box
TID 5551	3.5" x 10", Clear	200/Box
TID 5552	5.25" x 11", Clear	200/Box



## Autoclave High Temperature Data Logger (HiTemp 135)

- Built for use in severe environments
- Stainless steel submersible withstands temperatures up to 140°C (284°F) with an accuracy of  $\pm 0.1^{\circ}\text{C}$  ( $0.18^{\circ}\text{F}$ )
- Stores up to 32,700 date and time stamped readings while non-volatile solid state memory retains data even if the battery becomes discharged
- Graphical, tabular and summary data is provided for analysis using the software and can be viewed in  $^{\circ}\text{C}$ ,  $^{\circ}\text{F}$ , K or  $^{\circ}\text{R}$
- Data can automatically export to Excel® for further calculations

ITEM #	DESCRIPTION	QUANTITY
<b>THM ACCHITEMP135</b>	2" Probe	Each
<b>THM ACCHITEMP135FC</b>	24" Flex Probe	Each
<b>THM ACCTIFC400</b>	Software	Each



## Autoclave Indicator Tape

- Ideal to secure different types of sterilization packs
- Designed to distinguish processed and unprocessed items
- Permanent ink leaves no bleeding on tape after sterilization
- Made of strong crepe-embossed paper with pressure-sensitive adhesive for greater adhesion
- Upgraded coating increases ease of handling and application
- Enhanced exterior coating prevents ink transfer and improves chemical indicator appearance for a clearer color change

ITEM #	DESCRIPTION	QUANTITY
<b>PPR 26800800</b>	Blue, 3/4" x 60yds	48/Case
<b>PPR 26800900</b>	Blue, 1" x 60yds	36/Case
<b>PPR 26800400</b>	Strate-Line®, 1/2" x 60yds	72/Case
<b>PPR 26800500</b>	Strate-Line®, 3/4" x 60yds	48/Case
<b>PPR 26800600</b>	Strate-Line®, 1" x 60yds	36/Case





## Tanner Scientific® Specimen Cups

- Shatterproof, leakproof, and odor resistant design
- Excellent for biological sample collection
- Made of quality transparent polypropylene for optimum specimen viewing
- Tamper-evident seal ensures sterility of sample **(STERILE ONLY)**
- Patient ID label for writing sample information **(STERILE ONLY)**
- Graduated for urine and stool collection and transport
- Temperature strip helps verify integrity of urine samples
- Conventional cups equipped with orange colored lid
- Graduated with readings in ounces (oz) and milliliters (mL)

ITEM #	DESCRIPTION	QUANTITY
<b>TNR HXK261</b>	3oz, Non-Sterile	400/Case
<b>TNR HXK262</b>	3oz, Sterile	400/Case
<b>TNR HXK263</b>	3oz, Sterile, Temp Strip	400/Case
<b>TNR HXK351</b>	4oz, Non-Sterile	400/Case
<b>TNR HXK352</b>	4oz, Sterile	400/Case

## Samco™ Bio-Tite™ Specimen Cups

- Shatter-resistant, wide-mouth containers for urine collection
- Prevent bio-hazardous spills with the proprietary, all plastic, leakproof Bio-Tite™ seal
- Tested at varying pressures, making them ideal for use in various transport systems
- Stackable feature conserves storage space
- Manufactured from virgin polypropylene
- Natural cap and container pre-assembled

ITEM #	DESCRIPTION	QUANTITY
<b>SMC 010038</b>	4oz, Sterile	300/Case



## Kimwipes®

- Delicate task wipers efficiently clean liquids, dust and particles in a variety of light-duty applications
- Anti-static dispensing system reduces lint and electrostatic discharge (for sensitive environments like labs)
- Push-Up™ box dispenses wipers one at a time to reduce waste

ITEM #	DESCRIPTION	QUANTITY
<b>KIM 34155</b>	4.5" x 8.5", White, 1-Ply	280/Box
<b>AME TWD00101E</b>	5" x 5" KimWipes® Dispenser	Each



## Cotton-Tipped Applicators

- Ideal for applying medications
- 6" x 1/10", Plastic Shaft, Sterile

ITEM #	DESCRIPTION	QUANTITY
<b>PRA 76701</b>	Cotton Tipped Applicators	100/Box





## BluTouch™ Nitrile Exam Gloves

- **Color:** Blue, Powder-Free, Non-Sterile, Latex-Free
- High barrier protection and superior solvent resistance
- Disposable, ambidextrous and textured fingertips for better grip
- Exceeds ASTM Standards



ITEM #	DESCRIPTION	QUANTITY
TNR 700	Sizes Available : XS/S/M/L/XL	100/Box

**FREE SAMPLES**



Boxes Excluded

## Triple Glove Box Holder

- Made of clear, durable, ECO friendly PETG plastic
- Ideal for any area where cross contamination is an issue
- Vertical or horizontal holder loads up to three different glove boxes and can be mounted on a variety of surfaces
- Easy-to-clean holder withstands years of use
- All single glove boxes fit this model
- **Dimensions:** 15-1/2"H x 11-1/4"W x 3-3/4"D

ITEM #	DESCRIPTION	QUANTITY
OMN 305362	Triple Glove Box Holder	Each





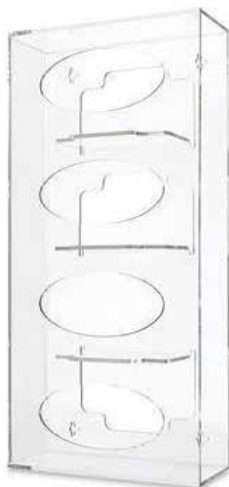
## TruTouch<sup>TM</sup> Vinyl Exam Gloves

- **Color:** Clear, Powder-Free, Non-Sterile, Latex-Free
- Soft, comfortable fit and economical biological barrier protection
- Disposable, ambidextrous and good for short-term, low-risk tasks
- DEHP (diethylhexyl-phthalate) Free



ITEM #	DESCRIPTION	QUANTITY
TNR 400	Sizes Available : XS/S/M/L/XL	100/Box

**FREE SAMPLES**



## Quadruple Glove Box Holder

- Clear acrylic construction
- Accommodates up to four glove boxes to meet staff needs
- Side loading glove dispenser keeps gloves nearby
- Wall-mountable (hardware included)
- Displays vertically or horizontally on a variety of surfaces
- Slots make swapping empty boxes for fresh ones fast
- **Dimensions:** 21-1/4"H x 10-1/2"W x 4-1/8"D

ITEM #	DESCRIPTION	QUANTITY
DYM 400031	Quadruple Glove Box Holder	Each

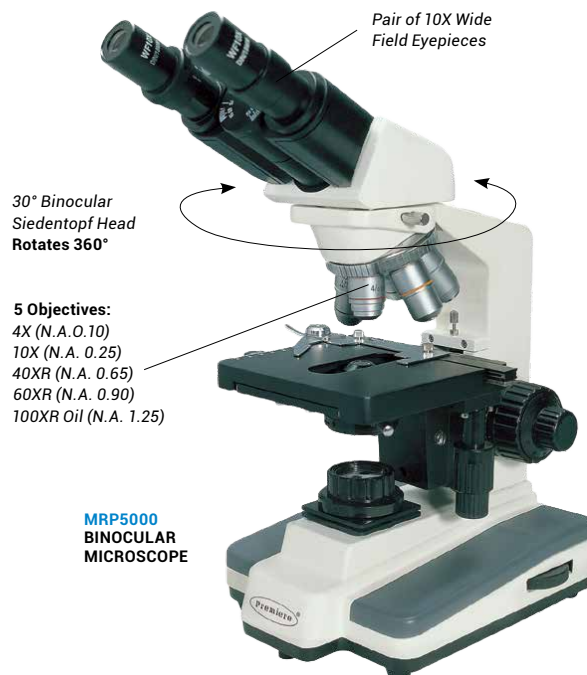
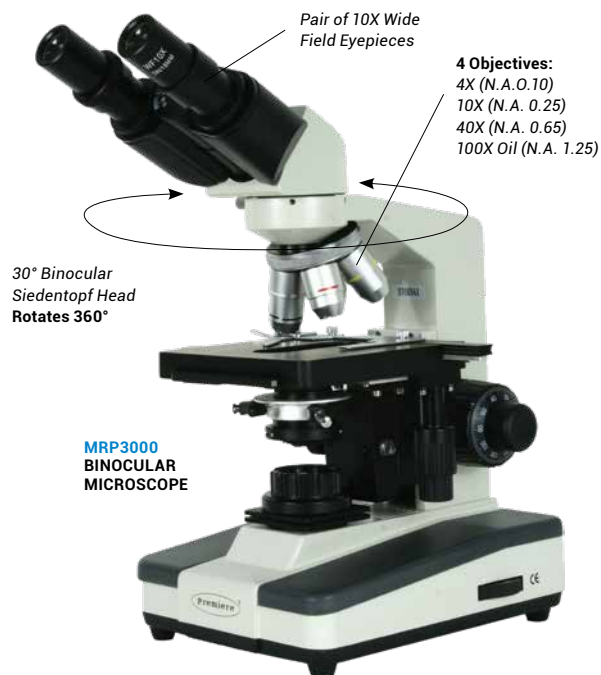


FAX 800.359.8807



WEB MercedesScientific.com





## Professional Binocular Microscopes

- Objectives face backwards for more space
- Base has a comfortable plastic plating over the metal for less heat conduction
- Field diaphragm adjustment built into the illuminator offers Koehler illumination for more lighting control

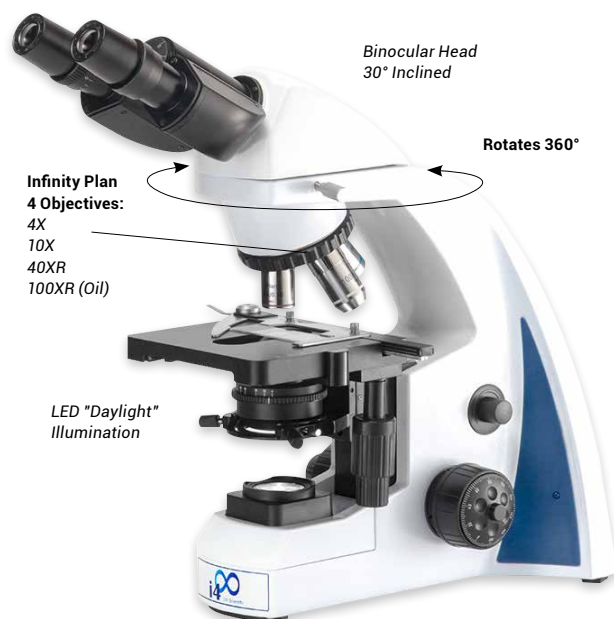
### FEATURES

- 30° inclined binocular Siedentopf head, rotatable 360°
- Pair of 10X widefield eyepieces, interpupillary distance adjustable from 55-75mm
- Abbe condenser NA 1.25 and Iris diaphragm with filter holder including blue filter
- **DIN Achromatic Parfocal and Parcentered Objectives, Backward Mounted:**  
 4X (N.A. 0.10), 10X (N.A. 0.25), 40X (N.A. 0.65), 100X (Oil Immersion N.A. 1.25)  
 60XR (N.A. 0.90) **MRP5000 ONLY**
- Magnifications: 40X to 1000X
- Five objectives and interchangeable condenser system applies to bright field, phase contrast, dark field and polarized light techniques **MRP5000 ONLY**
- Lower position of mechanical stage knob **MRP5000 ONLY**

ITEM #	DESCRIPTION	QUANTITY
<b>CAS MRP3000</b>	Professional Microscope, 4 Objectives	Each
<b>CAS MRP5000</b>	Professional Microscope, 5 Objectives	Each



**REVELATION III**  
BINOCULAR MICROSCOPE



**i4 INFINITY**  
BINOCULAR MICROSCOPE

## Revelation III Binocular Microscope

- Features LED illumination for daylight color, low heat, low power consumption and super-long bulb life (30,000 hours)
- **Includes:** DIN Achromatic or DIN Plan Optics and 30-Year Anti-Fungal Coating

ITEM #	DESCRIPTION	QUANTITY
<b>LWS R3MBN4ADAL3</b>	Revelation III Binocular Microscope	Each

## i4 Infinity Binocular Microscope

- Features exceptional optical quality and expandability for top-notch performance
- With cool, long-life LED illumination, the i4 Infinity microscope is the perfect choice for durability, dependability, and superior imaging
- Use the rotating head to adjust the height for taller users
- Infinity Plan optics with a 30-year anti-fungal coating match quality with value

ITEM #	DESCRIPTION	QUANTITY
<b>LWS i4MBN4AIPL3</b>	i4 Infinity Binocular Microscope	Each

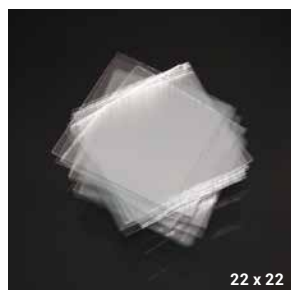


FAX 800.359.8807

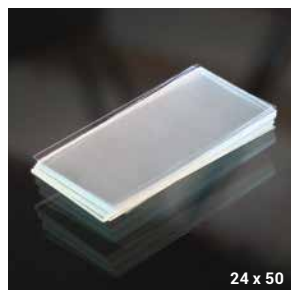


WEB MercedesScientific.com

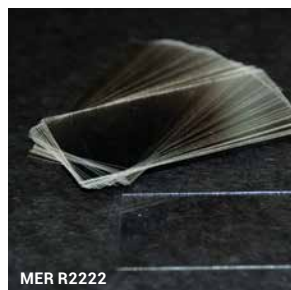




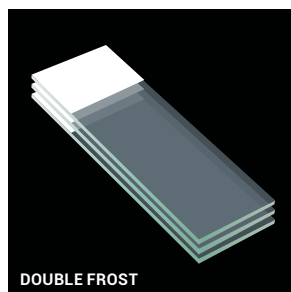
22 x 22



24 x 50



MER R2222



DOUBLE FROST



SINGLE FROST

## Tanner Scientific® Coverglass

- Suitable for a host of laboratory applications ranging from histopathology, cytology, microbiology and life sciences
- Ultra-thin, clear, non-stick surface is easy to handle
- **Thickness:** #1 (0.16-0.19mm), #1.5 (0.13-0.16mm)

ITEM #	DESCRIPTION	QUANTITY
<b>TNR 2222</b>	22 x 22, #1	10 oz/Case
<b>TNR 2440</b>	24 x 40, #1	10 oz/Case
<b>TNR 2450</b>	24 x 50, #1	10 oz/Case
<b>TNR 24501.5</b>	24 x 50 #1.5	10 oz/Case
<b>TNR 2450AC</b>	24 x 50, #1	20 oz/Case
<b>TNR 2455</b>	24 x 55, #1	10 oz/Case
<b>TNR 2460</b>	24 x 60, #1	10 oz/Case
<b>TNR 24601.5</b>	24 x 60, #1.5	10 oz/Case

## PlatinumLine® Coverglass

- German manufactured from water-white colorless borosilicate glass with an optimum hydrolytic resistance
- Very fine glass particles powder the surface to prevent sticking caused by stacking flat coverglass
- **Thickness:** #1 (0.13-0.17mm)

ITEM #	DESCRIPTION	QUANTITY
<b>MER R2222</b>	22 x 22mm	10 oz/Case

## Tanner Scientific® Slides

- Pre-cleaned slides measure 1" x 3" x 1mm
- Frosted slides are made using a unique chemical etching process and whose smooth frosted finish won't wear out slide marking pens

ITEM #	DESCRIPTION	QUANTITY
<b>TNR PLN90</b>	90° Plain Slide	1440/Case
<b>TNR SGLFROST</b>	Single Frost, 45° or 90°	1440/Case
<b>TNR DFROST</b>	Double Frost, 45° or 90°	1440/Case



EKI 605380Z

EKI 7164125ML

EKI 4815125ML

## Gram Stain Kit

### FOR BACTERIAL DIFFERENTIATION

**Includes:** Gentian Violet Stain Solution, Iodine Stain Solution, Decolorizer Solution, Safranin Stain Solution

ITEM #	DESCRIPTION	QUANTITY
EKI 605380Z	8oz Gram Stain Kit Bottles	Kit

## Methylene Blue Solution

### 1% W/V IN ALCOHOL

- For staining blood films and smears used in cytology, RNA or DNA for viewing under the microscope or on hybridization membranes

ITEM #	DESCRIPTION	QUANTITY
EKI 7164125ML	Methylene Blue Solution	125mL

## Immersion Oil

- Frequently used with immersion objectives between the specimen and microscope lens to eliminate light deflection and interferences
- Clear, colorless and safe to use with valuable optics equipment

ITEM #	DESCRIPTION	QUANTITY
EKI 4815125ML	Type A, Low Viscosity 12	125mL
EKI 4815500ML	Type A, Low Viscosity 5	500mL







## Hemocytometer

- Specially designed for counting erythrocytes and leukocytes
- Double rulings are visible through a wide range of illumination with fused rhodium on glass provides distinct lines
- Neubauer rulings are 0.1mm below cover glass
- H-shaped moat offers two counting areas



ITEM #	DESCRIPTION	QUANTITY
<b>LWS CTLHEMMGLDR</b>	Hemocytometer	Each

## Lens Paper

- Suitable for cleaning glass lenses on cameras, microscopes and other optical instruments
- Lint-free sheets are glued and bound in a booklet for easy removal
- Soft, silk-like paper does not collect dust or become greasy



ITEM #	DESCRIPTION	QUANTITY
<b>CAS 5220</b>	4" x 6", 50-Sheet Booklet	25/Pack



Agar, Universal Beer.....	15-17	Fume Hoods.....	8-10	Pipets, Serological.....	13
Alcohol, Isopropyl.....	18	Funnels.....	21	Pipets, Transfer.....	12
Analytical Balance.....	50	Glove Box Holder.....	58-59	Pipette Stands.....	30
Applicators.....	57	Gloves.....	58-59	Pouches, Autoclave Sterilization.....	51
ATP Tests.....	4	Gram Stain Kit.....	63	Rack, Wire Drying.....	41
Autoclave Cleaner.....	54	Gravity Convection Ovens.....	49	Scales.....	50
Autoclave Data Logger.....	55	Hemocytometer.....	64	Screw Caps.....	35
Autoclave Envelopes.....	54	Holder, Glove Box.....	58-59	Self-Standing Tubes.....	20
Autoclave Indicator Tape.....	55	Hoods, Fume.....	8-10	Serological Pipets.....	13
Autoclave Sterilization Pouches.....	51	Immersion Oil.....	63	Shakers.....	46
Autoclaves.....	52-53	Incubators.....	48-49	Slides.....	62
Beakers.....	23-25	Inoculating Loops.....	11	Slides, Oxidase Test.....	15
Beer Agar.....	15-17	Isopropyl Alcohol.....	18	Solution, Methylene Blue.....	63
Beer Culture Media.....	16	Jugs.....	25	Solutions, pH.....	19
Bottles.....	27-29	Kimwipes.....	57	Solvents.....	18-19
Bulb, Filler.....	41	Kit, Gram Stain.....	63	Specimen Cups.....	56-57
Caps.....	20, 35-36	Lens Paper.....	64	Stands, Pipette.....	30
Carboys.....	31	Loops, Inoculating.....	11	Sterile Culture Tubes.....	39
Centrifuge.....	42-45	Media, Beer Culture.....	16	Tape, Autoclave.....	55
Centrifuge Tubes.....	32-35	Meters, pH.....	5-7	Test Tubes.....	20, 38, 40
Cleaner, Autoclave.....	54	Methylene Blue Solution.....	63	Tests, ATP.....	4
Clock.....	41	Microcentrifuge.....	45	Timer.....	41
Closures, Dual Position.....	39	Microcentrifuge Tubes.....	20	Transfer Pipets.....	12
Colony Counter.....	14	Microcentrifuge Tubes.....	37	Transport Tubes.....	20, 40
Cotton-Tipped Applicators.....	57	Microscope Slides.....	62	Tubes.....	20, 32-40
Counter, Colony.....	14	Microscopes.....	60-61	Tubes, Centrifuge.....	32-35
Coverglass.....	62	Microwaves.....	47	Tubes, Culture.....	33
Culture Tubes.....	33	Nitrile Gloves.....	58	Tubes, Microcentrifuge.....	37
Cups, Specimen.....	56-57	Nystatin.....	15	Tubes, PCR.....	37
Cylinders.....	22	Oil, Immersion.....	63	Tubes, Sterile Culture.....	39
Data Logger, Autoclave.....	55	Ovens.....	49	Tubes, Test.....	38
Dishes, Petri.....	12	Oxidase Test Slides.....	15	Universal Beer Agar.....	15-17
Disruptors.....	46	Paper, Lens.....	64	Universals Safety Filler Bulb.....	41
Drybaths.....	47	PCR Tubes.....	37	Vinyl Gloves.....	59
Dual Position Closures.....	39	Petri Dishes.....	12	Wash Bottles.....	28-29
Envelopes, Autoclave.....	54	pH Meters.....	5-7	Wipes.....	57
Film, Wrapping.....	31	pH Solutions.....	19	Wire Drying Rack.....	41
Flasks.....	26	Pipet Tips.....	20	Wrapping Film.....	31



# Mercedes Scientific distributes quality glass, metal and plastic containers from Qorpak!

Choose from thousands of SKUs. Everyday low prices to save you more!

## Containers & Closures

- Bottles, Jars and Jugs in Glass & Plastic
- Vials
- Safety-Coated Glass Containers
- Plastic Pails & Carboys
- Metal Containers
- Sample Containers
- Flasks, Beakers & Cylinders
- Phenolic & Polypropylene Closures
- Shrink Bands

## Laboratory Supplies

- Chemical Solutions
- Media
- Gloves
- Bags
- Filtration
- Pipets
- Slides
- Stir Bars
- Water & Wastewater Testing Supplies
- Weigh Dishes & Pans

## Benchtop Equipment

- Mixers & Shakers
- Scales & Balances
- Hot Plates



## CALL TODAY FOR MORE PRODUCT INFORMATION!

Qorpak®, a division of Berlin Packaging, has been a leading resource for laboratory packaging and supplies to allow customers to focus on their important research and testing.

## ORDERING INFO:

- Call Monday–Friday, 8am–6pm EST to speak directly with one of our customer service representatives.
- **Closed Saturdays & Sundays (Online: Open 24/7)**  
Voice Messaging Available

## RETURN POLICY:

We pride ourselves in providing quality medical products at an outstanding value, and our goal is for you to be completely satisfied with your order. To ensure quality and maintain integrity in the event of damaged or discrepant orders, please review the following guidelines carefully.

## SHIPPING DISCREPANCIES:

Please examine your packages upon receipt to ensure your order is correct. This can be done by identifying the box with the enclosed packing slip. Please keep in mind that with multiple box shipments the packing list will be in only one box. It is your responsibility to confirm that you have received all of the items indicated on your packing slip. Failure to report shipping discrepancies within five business days prevents us from accurately problem-solving the issue; therefore variances reported after 5 business days will not be credited. If the product you order is a custom order and requires a longer lead time than 7 days, a customer service representative will notify you.

## RETURNS:

All return requests must be called into our **Customer Care Center** at 1.800.331.2716 prior to return and must be assigned an **RMA (Return Material Authorization)** number. If applicable, a FedEx pickup will be scheduled at time of authorization. Boxes containing product that have been **written on or compromised** in any way will not be accepted for return. All products must be returned in the **original packaging and packed in an additional outer box** to reduce the possibility of damage during return shipping.

- Returns may be subject to a minimum **15% restocking charge**.
- **Non-refrigerated product must be returned within 30 days of receipt. Unfortunately, we can NOT accept returns for refrigerated product.**
- Any product refused or returned **without an authorized RMA** will be subject to a restocking fee or denial of credit or replacement.
- Mercedes Scientific reserves the right to deny a return request outside of the above guidelines. **After 30 days**, the RMA and return option are **no longer valid** and will **NOT be authorized or accepted**.
- Capital equipment subject to additional terms.

# SHOP ONLINE

[www.MercedesScientific.com](http://www.MercedesScientific.com)

- Find **thousands of high quality products** at the lowest prices
- Easily manage account and **pay your bill** here
- Quickly order and **access your shopping history**
- **Chat live** with a representative
- View **online catalog** here

**PHONE: 800.331.2716    FAX: 800.359.8807**  
**EMAIL: [ORDERS@MERCEDESSCIENTIFIC.COM](mailto:ORDERS@MERCEDESSCIENTIFIC.COM)**





12210 RANGELAND PKWY  
LAKEWOOD RANCH, FL 34211

2019-2020 BREWERY  
PRODUCT GUIDE - #CAT BR01

PHONE 800.331.2716  
WEB [MercedesScientific.com](http://MercedesScientific.com)



While every effort has been made to ensure that the material contained herein is accurate at time of publication, Mercedes Scientific is not responsible for typographical or photographic errors, inaccuracies or misprints contained within printed materials, web site content, web-based advertisements, email advertisements and/or online catalogs. Specifications, colors, legal restrictions, pricing and availability of all products are subject to change or discontinuation at any time without prior notice. Mercedes Scientific reserves the right to change prices, or not sell an item, due to error in pricing. It may be necessary to substitute an item with a product of equal or better quality and value that varies slightly from the print and/or online description. Please contact us at 800.331.2716 to confirm pricing. Mercedes Scientific and all associated marks are trademarks of Mercedes Scientific, LLC.